



ELECTRONIC COPY

766617803
Report verification at igi.org

DIAMOND REPORT

March 23, 2026
IGI Report Number **766617803**
Description **NATURAL DIAMOND**
Shape and Cutting Style **EMERALD CUT**
Measurements **7.89 X 5.52 X 3.79 MM**

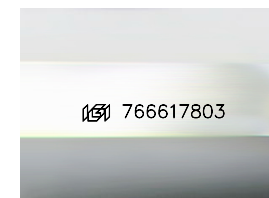
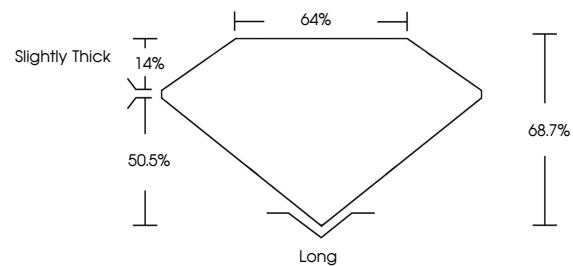
GRADING RESULTS

Carat Weight **1.58 CARAT**
Color Grade **I**
Clarity Grade **VVS 2**
Cut Grade **VERY GOOD**

ADDITIONAL GRADING INFORMATION

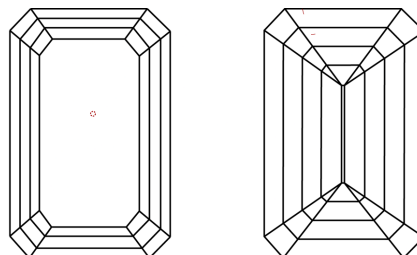
Polish **EXCELLENT**
Symmetry **EXCELLENT**
Fluorescence **VERY SLIGHT**
Inscription(s) **766617803**

PROPORTIONS



Sample Image Used

CLARITY CHARACTERISTICS



KEY TO SYMBOLS

Red symbols indicate internal characteristics.
Green symbols indicate external characteristics.

COLOR

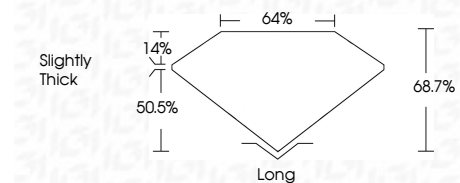
D - F	G - J	K - M	N - R	S - Z	FANCY
Colorless	Near Colorless	Slightly Tinted	Very Light Color	Light Color	

CLARITY

FL	IF	VVS ¹⁻²	VS ¹⁻²	SI ¹⁻²	I ¹⁻³
Flawless	Internally Flawless	Very Very Slightly Included	Very Slightly Included	Slightly Included	Included



March 23, 2026
IGI Report Number **766617803**
Description **NATURAL DIAMOND**
Shape and Cutting Style **EMERALD CUT**
Measurements **7.89 X 5.52 X 3.79 MM**
GRADING RESULTS
Carat Weight **1.58 CARAT**
Color Grade **I**
Clarity Grade **VVS 2**
Cut Grade **VERY GOOD**



ADDITIONAL GRADING INFORMATION

Polish **EXCELLENT**
Symmetry **EXCELLENT**
Fluorescence **VERY SLIGHT**
Inscription(s) **766617803**



IGI



March 23, 2026	IGI Report No 766617803	EMERALD CUT	1.58 CARAT	I	VVS 2	VERY GOOD	7.89 X 5.52 X 3.79 MM	68.7%	64%	Slightly Thick	Long	EXCELLENT	EXCELLENT	VERY SLIGHT	766617803
IGI Report No	766617803	EMERALD CUT	1.58 CARAT	I	VVS 2	VERY GOOD	7.89 X 5.52 X 3.79 MM	68.7%	64%	Slightly Thick	Long	EXCELLENT	EXCELLENT	VERY SLIGHT	766617803