



ELECTRONIC COPY

766617790
Report verification at igi.org

DIAMOND REPORT

March 11, 2026
IGI Report Number **766617790**
Description **NATURAL DIAMOND**
Shape and Cutting Style **EMERALD CUT**
Measurements **6.65 X 4.66 X 3.22 MM**

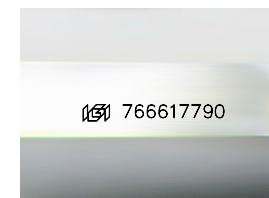
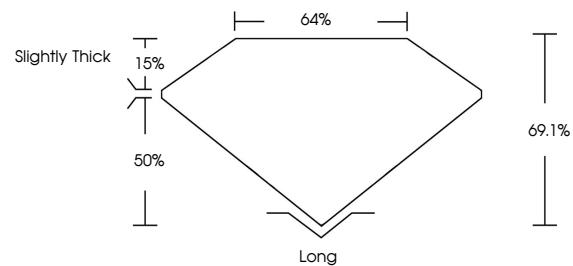
GRADING RESULTS

Carat Weight **1.00 CARAT**
Color Grade **I**
Clarity Grade **VVS 2**
Cut Grade **VERY GOOD**

ADDITIONAL GRADING INFORMATION

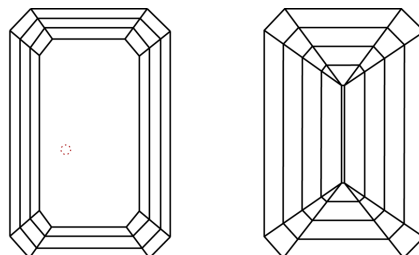
Polish **EXCELLENT**
Symmetry **EXCELLENT**
Fluorescence **NONE**
Inscription(s) **766617790**

PROPORTIONS



Sample Image Used

CLARITY CHARACTERISTICS



KEY TO SYMBOLS

Red symbols indicate internal characteristics.
Green symbols indicate external characteristics.

COLOR

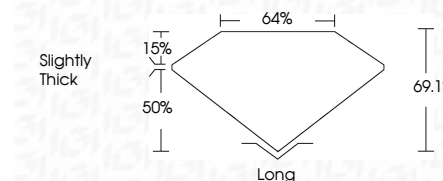
D - F	G - J	K - M	N - R	S - Z	FANCY
Colorless	Near Colorless	Slightly Tinted	Very Light Color	Light Color	

CLARITY

FL	IF	VVS 1-2	VS 1-2	SI 1-2	I 1-3
Flawless	Internally Flawless	Very Very Slightly Included	Very Slightly Included	Slightly Included	Included



March 11, 2026
IGI Report Number **766617790**
Description **NATURAL DIAMOND**
Shape and Cutting Style **EMERALD CUT**
Measurements **6.65 X 4.66 X 3.22 MM**
GRADING RESULTS
Carat Weight **1.00 CARAT**
Color Grade **I**
Clarity Grade **VVS 2**
Cut Grade **VERY GOOD**



ADDITIONAL GRADING INFORMATION

Polish **EXCELLENT**
Symmetry **EXCELLENT**
Fluorescence **NONE**
Inscription(s) **766617790**



IGI



March 11, 2026
IGI Report No 766617790
EMERALD CUT
Carat Weight **1.00 CARAT**
Color Grade **I**
Clarity Grade **VVS 2**
Cut Grade **VERY GOOD**
Depth **69.1%**
Table **64%**
Girdle **Slightly Thick**
Culet **Long**
Polish **EXCELLENT**
Symmetry **EXCELLENT**
Fluorescence **NONE**
Inscriptions(s) **766617790**