



ELECTRONIC COPY

766617785
Report verification at igi.org

DIAMOND REPORT

March 5, 2026
IGI Report Number **766617785**
Description **NATURAL DIAMOND**
Shape and Cutting Style **EMERALD CUT**
Measurements **8.35 X 5.96 X 4.14 MM**

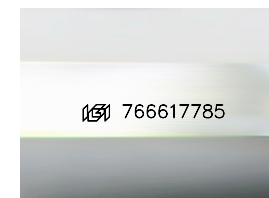
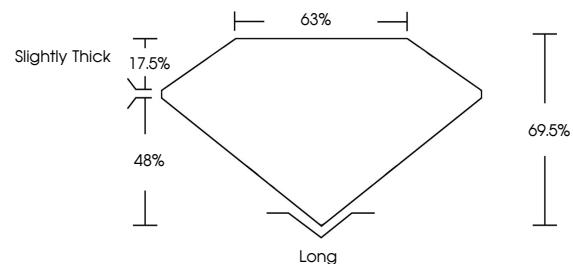
GRADING RESULTS

Carat Weight **2.00 CARATS**
Color Grade **J**
Clarity Grade **VS 1**
Cut Grade **VERY GOOD**

ADDITIONAL GRADING INFORMATION

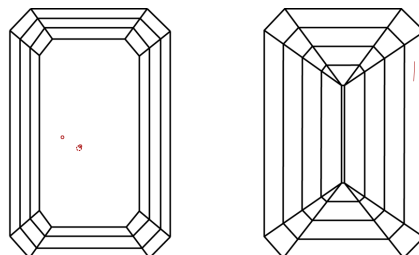
Polish **EXCELLENT**
Symmetry **EXCELLENT**
Fluorescence **NONE**
Inscription(s) **766617785**

PROPORTIONS



Sample Image Used

CLARITY CHARACTERISTICS



KEY TO SYMBOLS

Red symbols indicate internal characteristics.
Green symbols indicate external characteristics.

COLOR

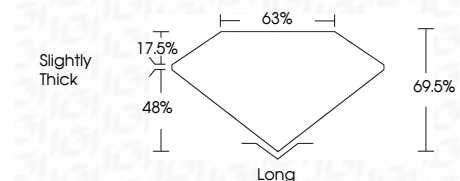
| D - F | G - J | K - M | N - R | S - Z | FANCY |
|-----------|----------------|-----------------|------------------|-------------|-------|
| Colorless | Near Colorless | Slightly Tinted | Very Light Color | Light Color | |

CLARITY

| FL | IF | VVS ¹⁻² | VS ¹⁻² | SI ¹⁻² | I ¹⁻³ |
|----------|---------------------|-----------------------------|------------------------|-------------------|------------------|
| Flawless | Internally Flawless | Very Very Slightly Included | Very Slightly Included | Slightly Included | Included |



March 5, 2026
IGI Report Number **766617785**
Description **NATURAL DIAMOND**
Shape and Cutting Style **EMERALD CUT**
Measurements **8.35 X 5.96 X 4.14 MM**
GRADING RESULTS
Carat Weight **2.00 CARATS**
Color Grade **J**
Clarity Grade **VS 1**
Cut Grade **VERY GOOD**



ADDITIONAL GRADING INFORMATION

Polish **EXCELLENT**
Symmetry **EXCELLENT**
Fluorescence **NONE**
Inscription(s) **766617785**



IGI



March 5, 2026
IGI Report No 766617785
EMERALD CUT
8.35 X 5.96 X 4.14 MM
2.00 CARATS
J
Color Grade
Colorless
VS 1
VERY GOOD
69.5%
48%
Slightly Thick
Long
EXCELLENT
EXCELLENT
NONE
NONE
766617785