



# INTERNATIONAL GEMOLOGICAL INSTITUTE

## DIAMOND REPORT

January 23, 2026  
IGI Report Number  
Description  
Shape and Cutting Style  
Measurements

**764687046**  
**NATURAL DIAMOND**  
**ROUND BRILLIANT**  
**5.29 - 5.32 X 3.35 MM**

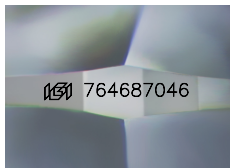
## GRADING RESULTS

Carat Weight **0.60 CARAT**  
Color Grade **H**  
Clarity Grade **VS 1**  
Cut Grade **VERY GOOD**

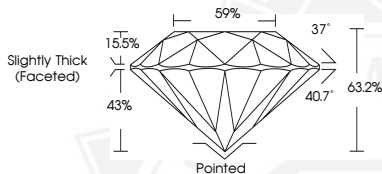
## ADDITIONAL GRADING INFORMATION

Polish **EXCELLENT**  
Symmetry **EXCELLENT**  
Fluorescence **VERY SLIGHT**  
Identification Features **CLOUD, PINPOINT**  
Inscription(s) **IGI 764687046**

ELECTRONIC COPY



Sample Image Used



THIS DOCUMENT WAS PRODUCED WITH THE FOLLOWING SECURITY MEASURES: SPECIAL DOCUMENT PAPER, INK SCREENS, WATERMARK, BACKGROUND DESIGNS, HOLOGRAM AND OTHER SECURITY FEATURES NOT LISTED AND DO EXCEED DOCUMENT SECURITY INDUSTRY GUIDELINES.

For terms & conditions and to verify this report, please visit [www.igi.org](http://www.igi.org)



January 23, 2026

IGI Report Number **764687046**

**ROUND BRILLIANT**

**NATURAL DIAMOND**

**5.29 - 5.32 X 3.35 MM**

Carat Weight **0.60 CARAT**  
Color Grade **H**  
Clarity Grade **VS 1**  
Cut Grade **VERY GOOD**  
Polish **EXCELLENT**  
Symmetry **EXCELLENT**  
Fluorescence **VERY SLIGHT**  
Inscription(s) **IGI 764687046**



January 23, 2026

IGI Report Number **764687046**

**ROUND BRILLIANT**

**NATURAL DIAMOND**

**5.29 - 5.32 X 3.35 MM**

Carat Weight **0.60 CARAT**  
Color Grade **H**  
Clarity Grade **VS 1**  
Cut Grade **VERY GOOD**  
Polish **EXCELLENT**  
Symmetry **EXCELLENT**  
Fluorescence **VERY SLIGHT**  
Inscription(s) **IGI 764687046**