



ELECTRONIC COPY

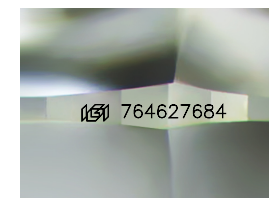
764627684
Report verification at igi.org



January 30, 2026
IGI Report Number **764627684**
Description **NATURAL DIAMOND**
Shape and Cutting Style **ROUND BRILLIANT**
Measurements **6.95 - 7.00 X 4.34 MM**

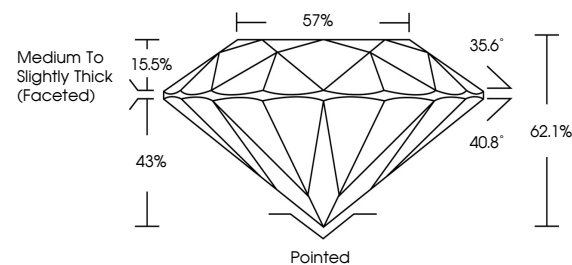
GRADING RESULTS

Carat Weight **1.30 CARAT**
Color Grade **J**
Clarity Grade **VVS 2**
Cut Grade **EXCELLENT**

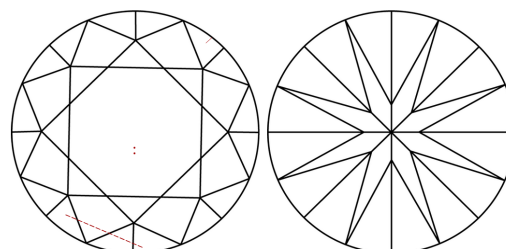


Sample Image Used

PROPORTIONS



CLARITY CHARACTERISTICS



KEY TO SYMBOLS

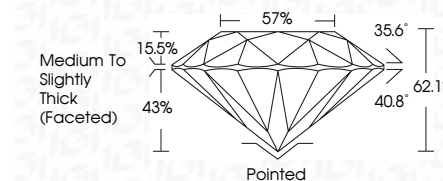
Red symbols indicate internal characteristics.
Green symbols indicate external characteristics.

COLOR

D - F	G - J	K - M	N - R	S - Z	FANCY
Colorless	Near Colorless	Slightly Tinted	Very Light Color	Light Color	

CLARITY

FL	IF	VVS 1-2	VS 1-2	SI 1-2	I 1-3
Flawless	Internally Flawless	Very Very Slightly Included	Very Slightly Included	Slightly Included	Included



ADDITIONAL GRADING INFORMATION

Polish **EXCELLENT**
Symmetry **EXCELLENT**
Fluorescence **NONE**
Inscription(s) **IGI 764627684**
Comments: IDEAL CUT ROUND BRILLIANT



IGI



January 30, 2026
IGI Report No 764627684
ROUND BRILLIANT
6.95 - 7.00 X 4.34 MM
1.30 CARAT
J
Color Grade
EXCELLENT
Clarity Grade
VVS 2
Depth
62.1%
Table
57%
Girdle
Medium To Slightly Thick (Faceted)
Culet
Pointed
Polish
EXCELLENT
Symmetry
EXCELLENT
Fluorescence
NONE
Inscription(s)
IGI 764627684

Comments: IDEAL CUT ROUND BRILLIANT