



ELECTRONIC COPY

764612236
Report verification at igi.org



February 4, 2026

IGI Report Number **764612236**

Description **NATURAL DIAMOND**

Shape and Cutting Style **EMERALD CUT**

Measurements **6.38 X 4.67 X 3.43 MM**

GRADING RESULTS

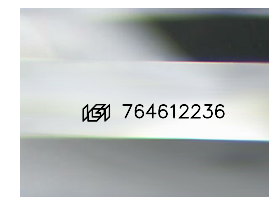
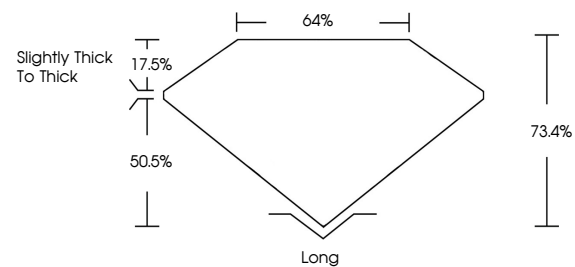
Carat Weight **1.01 CARAT**

Color Grade **H**

Clarity Grade **VS 1**

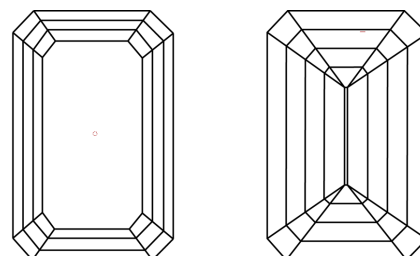
Cut Grade **VERY GOOD**

PROPORTIONS



Sample Image Used

CLARITY CHARACTERISTICS



KEY TO SYMBOLS

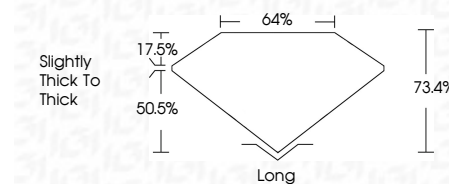
Red symbols indicate internal characteristics.
Green symbols indicate external characteristics.

COLOR

D - F	G - J	K - M	N - R	S - Z	FANCY
Colorless	Near Colorless	Slightly Tinted	Very Light Color	Light Color	

CLARITY

FL	IF	VVS 1-2	VS 1-2	SI 1-2	I 1-3
Flawless	Internally Flawless	Very Very Slightly Included	Very Slightly Included	Slightly Included	Included



ADDITIONAL GRADING INFORMATION

Polish **EXCELLENT**

Symmetry **EXCELLENT**

Fluorescence **NONE**

Inscription(s) **IGI 764612236**

February 4, 2026

IGI Report Number **764612236**

Description **NATURAL DIAMOND**

Shape and Cutting Style **EMERALD CUT**

Measurements **6.38 X 4.67 X 3.43 MM**

GRADING RESULTS

Carat Weight **1.01 CARAT**

Color Grade **H**

Clarity Grade **VS 1**

Cut Grade **VERY GOOD**

ADDITIONAL GRADING INFORMATION

Polish **EXCELLENT**

Symmetry **EXCELLENT**

Fluorescence **NONE**

Inscription(s) **IGI 764612236**



IGI



February 4, 2026
IGI Report No 764612236
EMERALD CUT
6.38 X 4.67 X 3.43 MM
1.01 CARAT
H
Color Grade
VS 1
VERY GOOD
73.4%
64%
Slightly Thick to Thick
Long
EXCELLENT
EXCELLENT
NONE
IGI 764612236