



**ELECTRONIC COPY**

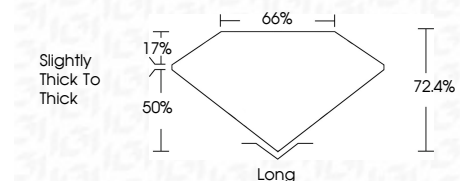
764612227  
Report verification at [igi.org](http://igi.org)



February 5, 2026  
IGI Report Number **764612227**  
Description **NATURAL DIAMOND**  
Shape and Cutting Style **EMERALD CUT**  
Measurements **6.96 X 5.08 X 3.68 MM**

**GRADING RESULTS**

Carat Weight **1.34 CARAT**  
Color Grade **J**  
Clarity Grade **VS 1**  
Cut Grade **VERY GOOD**



**ADDITIONAL GRADING INFORMATION**

Polish **EXCELLENT**  
Symmetry **EXCELLENT**  
Fluorescence **VERY SLIGHT**  
Inscription(s) **(IGI) 764612227**



**IGI**

February 5, 2026  
IGI Report No 764612227  
**EMERALD CUT**  
6.96 X 5.08 X 3.68 MM  
1.34 CARAT  
J  
Color Grade  
Color Grade  
VS 1  
Clarity Grade  
VERY GOOD  
Cut Grade  
Depth  
72.4%  
Table  
50%  
Girdle  
66%  
Slightly thick to thick  
Long  
EXCELLENT  
Polish  
EXCELLENT  
Symmetry  
EXCELLENT  
Fluorescence  
VERY SLIGHT  
Inscription(s)  
(IGI) 764612227

**DIAMOND REPORT**

February 5, 2026  
IGI Report Number **764612227**  
Description **NATURAL DIAMOND**  
Shape and Cutting Style **EMERALD CUT**  
Measurements **6.96 X 5.08 X 3.68 MM**

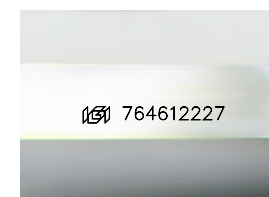
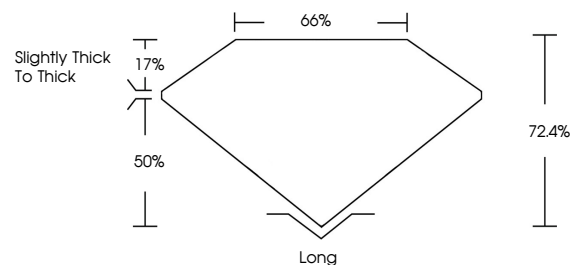
**GRADING RESULTS**

Carat Weight **1.34 CARAT**  
Color Grade **J**  
Clarity Grade **VS 1**  
Cut Grade **VERY GOOD**

**ADDITIONAL GRADING INFORMATION**

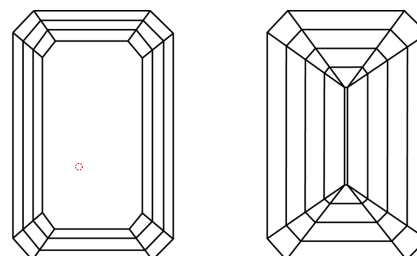
Polish **EXCELLENT**  
Symmetry **EXCELLENT**  
Fluorescence **VERY SLIGHT**  
Inscription(s) **(IGI) 764612227**

**PROPORTIONS**



Sample Image Used

**CLARITY CHARACTERISTICS**



**KEY TO SYMBOLS**

Red symbols indicate internal characteristics.  
Green symbols indicate external characteristics.

**COLOR**

D - F	G - J	K - M	N - R	S - Z	FANCY
Colorless	Near Colorless	Slightly Tinted	Very Light Color	Light Color	

**CLARITY**

FL	IF	VVS 1-2	VS 1-2	SI 1-2	I 1-3
Flawless	Internally Flawless	Very Very Slightly Included	Very Slightly Included	Slightly Included	Included

