



**ELECTRONIC COPY**

764612220  
Report verification at [igi.org](http://igi.org)



February 5, 2026  
IGI Report Number **764612220**  
Description **NATURAL DIAMOND**  
Shape and Cutting Style **EMERALD CUT**  
Measurements **6.38 X 4.61 X 3.42 MM**  
**GRADING RESULTS**  
Carat Weight **1.01 CARAT**  
Color Grade **J**  
Clarity Grade **VVS 1**  
Cut Grade **VERY GOOD**

**DIAMOND REPORT**

February 5, 2026  
IGI Report Number **764612220**  
Description **NATURAL DIAMOND**  
Shape and Cutting Style **EMERALD CUT**  
Measurements **6.38 X 4.61 X 3.42 MM**

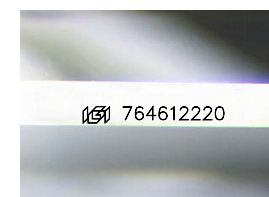
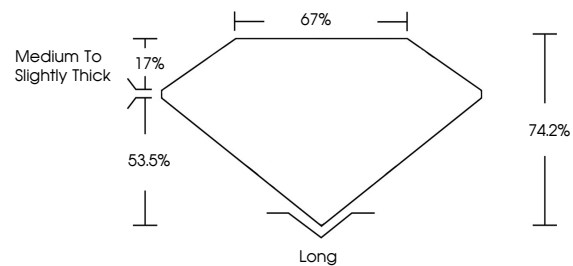
**GRADING RESULTS**

Carat Weight **1.01 CARAT**  
Color Grade **J**  
Clarity Grade **VVS 1**  
Cut Grade **VERY GOOD**

**ADDITIONAL GRADING INFORMATION**

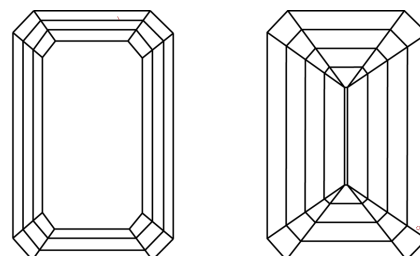
Polish **EXCELLENT**  
Symmetry **EXCELLENT**  
Fluorescence **VERY SLIGHT**  
Inscription(s) **764612220**

**PROPORTIONS**



Sample Image Used

**CLARITY CHARACTERISTICS**



**KEY TO SYMBOLS**

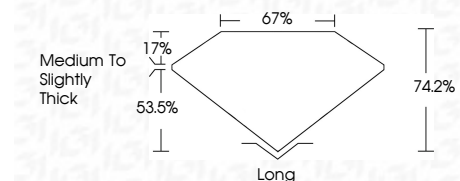
Red symbols indicate internal characteristics.  
Green symbols indicate external characteristics.

**COLOR**

D - F	G - J	K - M	N - R	S - Z	FANCY
Colorless	Near Colorless	Slightly Tinted	Very Light Color	Light Color	

**CLARITY**

FL	IF	VVS 1-2	VS 1-2	SI 1-2	I 1-3
Flawless	Internally Flawless	Very Very Slightly Included	Very Slightly Included	Slightly Included	Included



**ADDITIONAL GRADING INFORMATION**

Polish **EXCELLENT**  
Symmetry **EXCELLENT**  
Fluorescence **VERY SLIGHT**  
Inscription(s) **764612220**



**IGI**



February 5, 2026  
IGI Report No 764612220  
**EMERALD CUT**  
6.38 X 4.61 X 3.42 MM  
1.01 CARAT  
J  
VVS 1  
VERY GOOD  
74.2%  
67%  
Medium To Slightly Thick  
Long  
EXCELLENT  
EXCELLENT  
VERY SLIGHT  
VERY SLIGHT  
 764612220