



ELECTRONIC COPY

764612181
Report verification at igi.org

DIAMOND REPORT

February 5, 2026
IGI Report Number **764612181**
Description **NATURAL DIAMOND**
Shape and Cutting Style **PRINCESS CUT**
Measurements **6.24 X 6.23 X 4.40 MM**

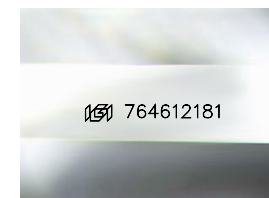
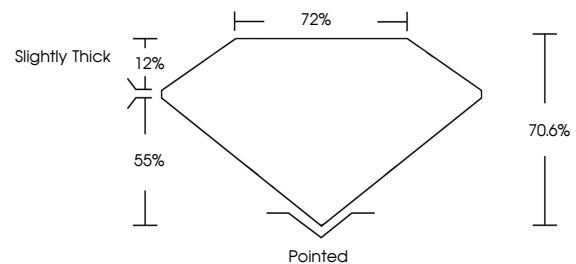
GRADING RESULTS

Carat Weight **1.50 CARAT**
Color Grade **K**
Clarity Grade **VVS 1**
Cut Grade **EXCELLENT**

ADDITIONAL GRADING INFORMATION

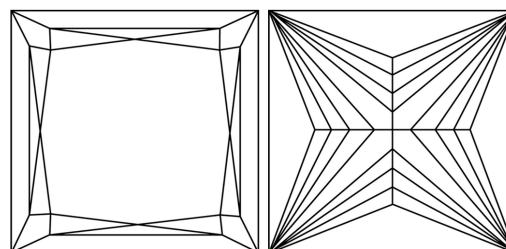
Polish **EXCELLENT**
Symmetry **EXCELLENT**
Fluorescence **VERY SLIGHT**
Inscription(s) **764612181**

PROPORTIONS



Sample Image Used

CLARITY CHARACTERISTICS



KEY TO SYMBOLS

Red symbols indicate internal characteristics.
Green symbols indicate external characteristics.

COLOR

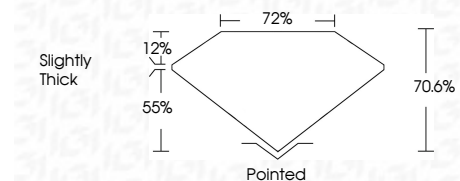
D - F	G - J	K - M	N - R	S - Z	FANCY
Colorless	Near Colorless	Slightly Tinted	Very Light Color	Light Color	

CLARITY

FL	IF	VVS ¹⁻²	VS ¹⁻²	SI ¹⁻²	I ¹⁻³
Flawless	Internally Flawless	Very Very Slightly Included	Very Slightly Included	Slightly Included	Included



February 5, 2026
IGI Report Number **764612181**
Description **NATURAL DIAMOND**
Shape and Cutting Style **PRINCESS CUT**
Measurements **6.24 X 6.23 X 4.40 MM**
GRADING RESULTS
Carat Weight **1.50 CARAT**
Color Grade **K**
Clarity Grade **VVS 1**
Cut Grade **EXCELLENT**



ADDITIONAL GRADING INFORMATION

Polish **EXCELLENT**
Symmetry **EXCELLENT**
Fluorescence **VERY SLIGHT**
Inscription(s) **764612181**



IGI



February 5, 2026
IGI Report No 764612181
PRINCESS CUT
6.24 X 6.23 X 4.40 MM
1.50 CARAT
K
VVS 1
EXCELLENT
70.6%
72%
Slightly Thick
Pointed
EXCELLENT
EXCELLENT
VERY SLIGHT
764612181