



**ELECTRONIC COPY**

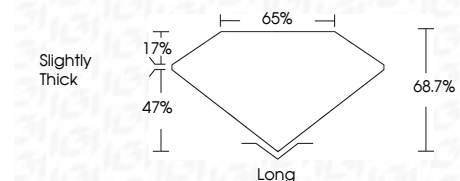
764612178  
Report verification at [igi.org](http://igi.org)



February 4, 2026  
IGI Report Number **764612178**  
Description **NATURAL DIAMOND**  
Shape and Cutting Style **EMERALD CUT**  
Measurements **6.66 X 4.67 X 3.21 MM**

**GRADING RESULTS**

Carat Weight **1.02 CARAT**  
Color Grade **J**  
Clarity Grade **VVS 2**  
Cut Grade **VERY GOOD**



**ADDITIONAL GRADING INFORMATION**

Polish **EXCELLENT**  
Symmetry **EXCELLENT**  
Fluorescence **VERY SLIGHT**  
Inscription(s) **(IGI) 764612178**



February 4, 2026  
IGI Report No 764612178  
**EMERALD CUT**  
Carat Weight **1.02 CARAT**  
Color Grade **J**  
Clarity Grade **VVS 2**  
Depth **68.7%**  
Table **65%**  
Girdle **Slightly Thick**  
Length **68.7%**  
Polish **EXCELLENT**  
Symmetry **EXCELLENT**  
Fluorescence **VERY SLIGHT**  
Inscriptions(s) **(IGI) 764612178**

**DIAMOND REPORT**

February 4, 2026  
IGI Report Number **764612178**  
Description **NATURAL DIAMOND**  
Shape and Cutting Style **EMERALD CUT**  
Measurements **6.66 X 4.67 X 3.21 MM**

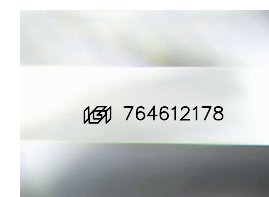
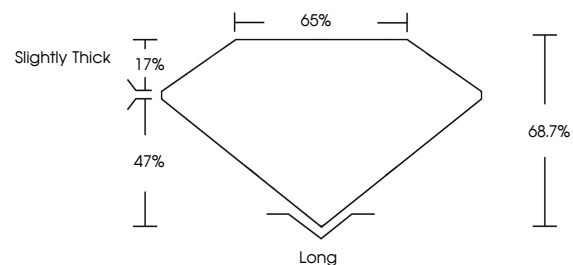
**GRADING RESULTS**

Carat Weight **1.02 CARAT**  
Color Grade **J**  
Clarity Grade **VVS 2**  
Cut Grade **VERY GOOD**

**ADDITIONAL GRADING INFORMATION**

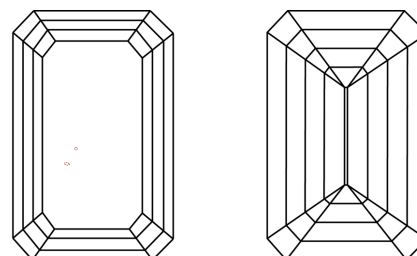
Polish **EXCELLENT**  
Symmetry **EXCELLENT**  
Fluorescence **VERY SLIGHT**  
Inscription(s) **(IGI) 764612178**

**PROPORTIONS**



Sample Image Used

**CLARITY CHARACTERISTICS**



**KEY TO SYMBOLS**

Red symbols indicate internal characteristics.  
Green symbols indicate external characteristics.

**COLOR**

D - F	G - J	K - M	N - R	S - Z	FANCY
Colorless	Near Colorless	Slightly Tinted	Very Light Color	Light Color	

**CLARITY**

FL	IF	VVS 1-2	VS 1-2	SI 1-2	I 1-3
Flawless	Internally Flawless	Very Very Slightly Included	Very Slightly Included	Slightly Included	Included

