



ELECTRONIC COPY

764612169
Report verification at igi.org

DIAMOND REPORT

February 3, 2026
IGI Report Number **764612169**
Description **NATURAL DIAMOND**
Shape and Cutting Style **SQUARE EMERALD CUT**
Measurements **5.25 X 5.25 X 3.73 MM**

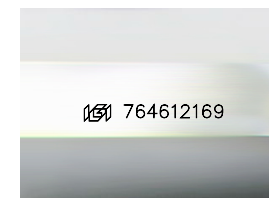
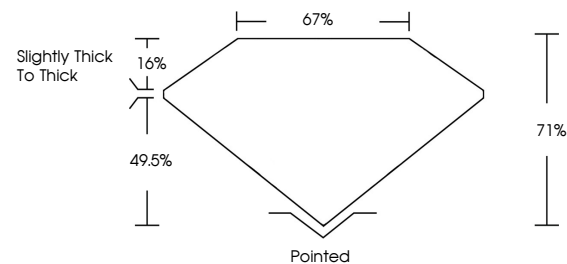
GRADING RESULTS

Carat Weight **1.01 CARAT**
Color Grade **J**
Clarity Grade **VS 1**
Cut Grade **VERY GOOD**

ADDITIONAL GRADING INFORMATION

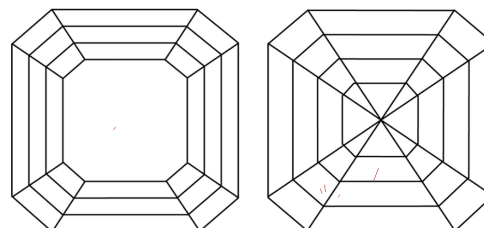
Polish **EXCELLENT**
Symmetry **EXCELLENT**
Fluorescence **NONE**
Inscription(s) **764612169**

PROPORTIONS



Sample Image Used

CLARITY CHARACTERISTICS



KEY TO SYMBOLS

Red symbols indicate internal characteristics.
Green symbols indicate external characteristics.

COLOR

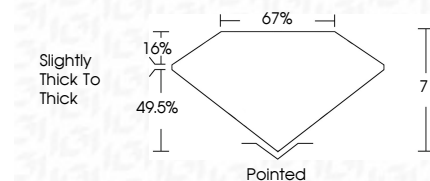
D - F	G - J	K - M	N - R	S - Z	FANCY
Colorless	Near Colorless	Slightly Tinted	Very Light Color	Light Color	

CLARITY

FL	IF	VVS ¹⁻²	VS ¹⁻²	SI ¹⁻²	I ¹⁻³
Flawless	Internally Flawless	Very Very Slightly Included	Very Slightly Included	Slightly Included	Included



February 3, 2026
IGI Report Number **764612169**
Description **NATURAL DIAMOND**
Shape and Cutting Style **SQUARE EMERALD CUT**
Measurements **5.25 X 5.25 X 3.73 MM**
GRADING RESULTS
Carat Weight **1.01 CARAT**
Color Grade **J**
Clarity Grade **VS 1**
Cut Grade **VERY GOOD**



ADDITIONAL GRADING INFORMATION

Polish **EXCELLENT**
Symmetry **EXCELLENT**
Fluorescence **NONE**
Inscription(s) **764612169**



IGI



February 3, 2026
IGI Report No 764612169
SQUARE EMERALD CUT
Carat Weight **1.01 CARAT**
Color Grade **J**
Clarity Grade **VS 1**
Depth **71%**
Table **67%**
Girdle **Slightly thick to thick**
Culet **Pointed**
Polish **EXCELLENT**
Symmetry **EXCELLENT**
Fluorescence **NONE**
Inscriptions(s) **764612169**