



ELECTRONIC COPY

764612149
Report verification at igi.org

DIAMOND REPORT

February 4, 2026
IGI Report Number **764612149**
Description **NATURAL DIAMOND**
Shape and Cutting Style **SQUARE EMERALD CUT**
Measurements **5.43 X 5.31 X 3.64 MM**

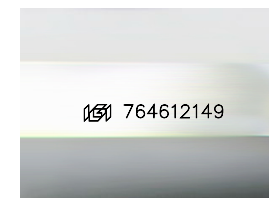
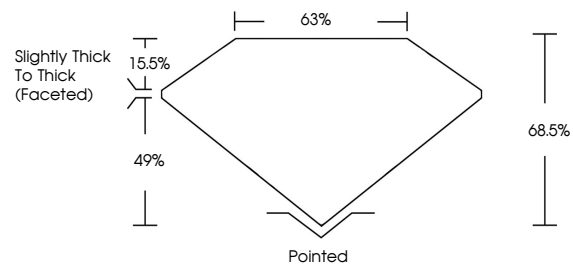
GRADING RESULTS

Carat Weight **1.00 CARAT**
Color Grade **K**
Clarity Grade **VS 2**
Cut Grade **VERY GOOD**

ADDITIONAL GRADING INFORMATION

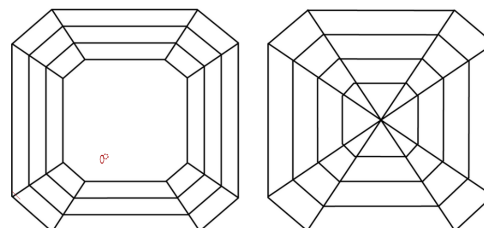
Polish **EXCELLENT**
Symmetry **EXCELLENT**
Fluorescence **NONE**
Inscription(s) **764612149**

PROPORTIONS



Sample Image Used

CLARITY CHARACTERISTICS



KEY TO SYMBOLS

Red symbols indicate internal characteristics.
Green symbols indicate external characteristics.

COLOR

D - F	G - J	K - M	N - R	S - Z	FANCY
Colorless	Near Colorless	Slightly Tinted	Very Light Color	Light Color	

CLARITY

FL	IF	VVS ¹⁻²	VS ¹⁻²	SI ¹⁻²	I ¹⁻³
Flawless	Internally Flawless	Very Very Slightly Included	Very Slightly Included	Slightly Included	Included



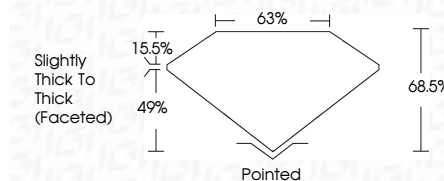
February 4, 2026
IGI Report Number **764612149**
Description **NATURAL DIAMOND**
Shape and Cutting Style **SQUARE EMERALD CUT**
Measurements **5.43 X 5.31 X 3.64 MM**

GRADING RESULTS

Carat Weight **1.00 CARAT**
Color Grade **K**
Clarity Grade **VS 2**
Cut Grade **VERY GOOD**

ADDITIONAL GRADING INFORMATION

Polish **EXCELLENT**
Symmetry **EXCELLENT**
Fluorescence **NONE**
Inscription(s) **764612149**



IGI



February 4, 2026
IGI Report No. 764612149
SQUARE EMERALD CUT
5.43 X 5.31 X 3.64 MM
1.00 CARAT
K
VS 2
VERY GOOD
68.5%
68%
Slightly Thick To Thick (Faceted)
Pointed
EXCELLENT
EXCELLENT
NONE
IGI 764612149