



ELECTRONIC COPY

764612140
Report verification at igi.org



February 4, 2026

IGI Report Number **764612140**

Description **NATURAL DIAMOND**

Shape and Cutting Style **EMERALD CUT**

Measurements **6.52 X 4.66 X 3.23 MM**

GRADING RESULTS

Carat Weight **1.00 CARAT**

Color Grade **J**

Clarity Grade **VS 1**

Cut Grade **VERY GOOD**

DIAMOND REPORT

February 4, 2026

IGI Report Number **764612140**

Description **NATURAL DIAMOND**

Shape and Cutting Style **EMERALD CUT**

Measurements **6.52 X 4.66 X 3.23 MM**

GRADING RESULTS

Carat Weight **1.00 CARAT**

Color Grade **J**

Clarity Grade **VS 1**

Cut Grade **VERY GOOD**

ADDITIONAL GRADING INFORMATION

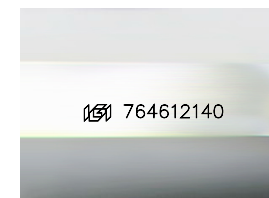
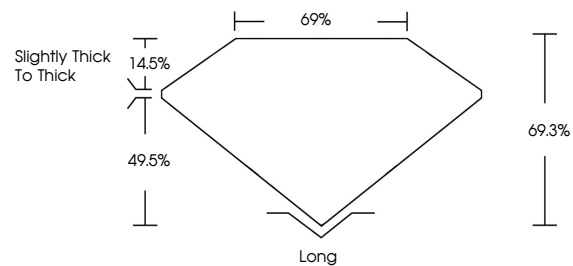
Polish **EXCELLENT**

Symmetry **EXCELLENT**

Fluorescence **VERY SLIGHT**

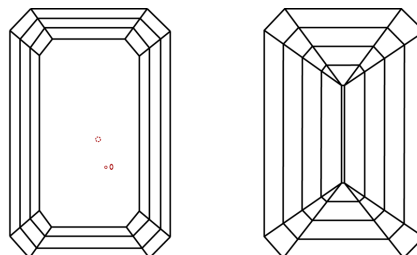
Inscription(s) **764612140**

PROPORTIONS



Sample Image Used

CLARITY CHARACTERISTICS



KEY TO SYMBOLS

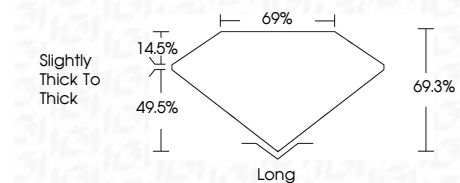
Red symbols indicate internal characteristics.
Green symbols indicate external characteristics.

COLOR

| D - F | G - J | K - M | N - R | S - Z | FANCY |
|-----------|----------------|-----------------|------------------|-------------|-------|
| Colorless | Near Colorless | Slightly Tinted | Very Light Color | Light Color | |

CLARITY

| FL | IF | VVS 1-2 | VS 1-2 | SI 1-2 | I 1-3 |
|----------|---------------------|-----------------------------|------------------------|-------------------|----------|
| Flawless | Internally Flawless | Very Very Slightly Included | Very Slightly Included | Slightly Included | Included |



ADDITIONAL GRADING INFORMATION

Polish **EXCELLENT**

Symmetry **EXCELLENT**

Fluorescence **VERY SLIGHT**

Inscription(s) **764612140**



IGI



| | | | | | | |
|-------------------------|-----------------------|-----------|-------------|-----------|-----------|-----------|
| February 4, 2026 | 1.00 CARAT | J | VS 1 | 69.3% | 69% | Long |
| IGI Report No 764612140 | 6.52 X 4.66 X 3.23 MM | VERY GOOD | VERY SLIGHT | EXCELLENT | EXCELLENT | EXCELLENT |
| EMERALD CUT | 1.00 CARAT | J | VS 1 | 69.3% | 69% | Long |
| Carat Weight | 1.00 CARAT | J | VS 1 | 69.3% | 69% | Long |
| Color Grade | 1.00 CARAT | J | VS 1 | 69.3% | 69% | Long |
| Clarity Grade | 1.00 CARAT | J | VS 1 | 69.3% | 69% | Long |
| Depth | 1.00 CARAT | J | VS 1 | 69.3% | 69% | Long |
| Table | 1.00 CARAT | J | VS 1 | 69.3% | 69% | Long |
| Grade | 1.00 CARAT | J | VS 1 | 69.3% | 69% | Long |
| Cut | 1.00 CARAT | J | VS 1 | 69.3% | 69% | Long |
| Polish | 1.00 CARAT | J | VS 1 | 69.3% | 69% | Long |
| Symmetry | 1.00 CARAT | J | VS 1 | 69.3% | 69% | Long |
| Fluorescence | 1.00 CARAT | J | VS 1 | 69.3% | 69% | Long |
| Inscription(s) | 1.00 CARAT | J | VS 1 | 69.3% | 69% | Long |