



ELECTRONIC COPY

764612120
Report verification at igi.org



February 4, 2026
IGI Report Number **764612120**
Description **NATURAL DIAMOND**
Shape and Cutting Style **EMERALD CUT**
Measurements **7.72 X 5.61 X 4.09 MM**
GRADING RESULTS
Carat Weight **1.85 CARAT**
Color Grade **J**
Clarity Grade **VVS 2**
Cut Grade **VERY GOOD**

DIAMOND REPORT

February 4, 2026
IGI Report Number **764612120**
Description **NATURAL DIAMOND**
Shape and Cutting Style **EMERALD CUT**
Measurements **7.72 X 5.61 X 4.09 MM**

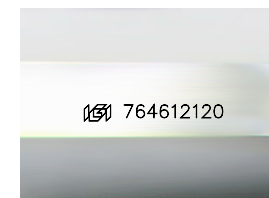
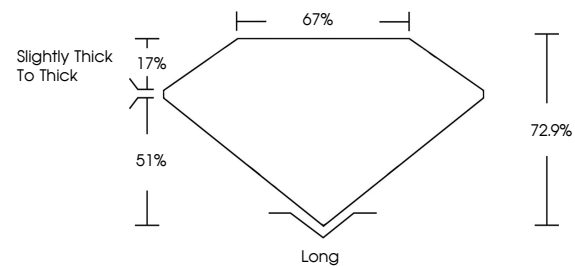
GRADING RESULTS

Carat Weight **1.85 CARAT**
Color Grade **J**
Clarity Grade **VVS 2**
Cut Grade **VERY GOOD**

ADDITIONAL GRADING INFORMATION

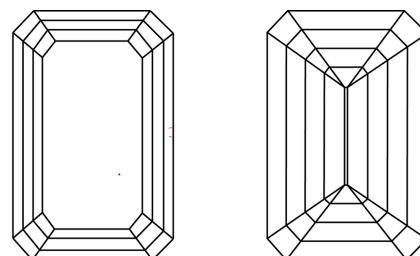
Polish **EXCELLENT**
Symmetry **EXCELLENT**
Fluorescence **VERY SLIGHT**
Inscription(s) **764612120**

PROPORTIONS



Sample Image Used

CLARITY CHARACTERISTICS



KEY TO SYMBOLS

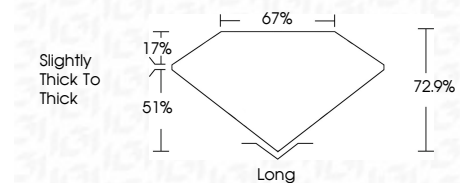
Red symbols indicate internal characteristics.
Green symbols indicate external characteristics.

COLOR

D - F	G - J	K - M	N - R	S - Z	FANCY
Colorless	Near Colorless	Slightly Tinted	Very Light Color	Light Color	

CLARITY

FL	IF	VVS 1-2	VS 1-2	SI 1-2	I 1-3
Flawless	Internally Flawless	Very Very Slightly Included	Very Slightly Included	Slightly Included	Included



ADDITIONAL GRADING INFORMATION

Polish **EXCELLENT**
Symmetry **EXCELLENT**
Fluorescence **VERY SLIGHT**
Inscription(s) **764612120**



IGI



February 4, 2026
IGI Report No 764612120
EMERALD CUT
1.85 CARAT
J
VVS 2
VERY GOOD
7.72 X 5.61 X 4.09 MM
72.9%
67%
Slightly thick to thick
Long
EXCELLENT
EXCELLENT
VERY SLIGHT
764612120