



**ELECTRONIC COPY**

**DIAMOND REPORT**

February 4, 2026  
IGI Report Number **764612068**  
Description **NATURAL DIAMOND**  
Shape and Cutting Style **RECTANGULAR PRINCESS**  
Measurements **5.49 X 5.15 X 3.88 MM**

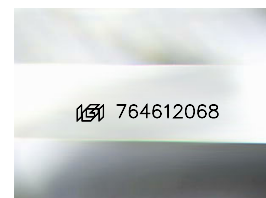
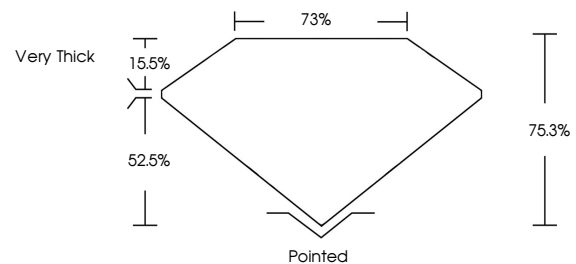
**GRADING RESULTS**

Carat Weight **1.03 CARAT**  
Color Grade **I**  
Clarity Grade **INTERNALLY FLAWLESS**  
Cut Grade **VERY GOOD**

**ADDITIONAL GRADING INFORMATION**

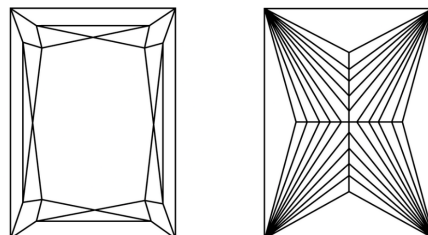
Polish **EXCELLENT**  
Symmetry **EXCELLENT**  
Fluorescence **VERY SLIGHT**  
Inscription(s) **764612068**

**PROPORTIONS**



Sample Image Used

**CLARITY CHARACTERISTICS**



**KEY TO SYMBOLS**

Red symbols indicate internal characteristics.  
Green symbols indicate external characteristics.

**COLOR**

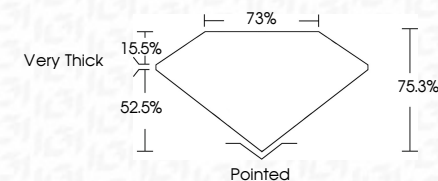
D - F	G - J	K - M	N - R	S - Z	FANCY
Colorless	Near Colorless	Slightly Tinted	Very Light Color	Light Color	

**CLARITY**

FL	IF	VVS <sup>1-2</sup>	VS <sup>1-2</sup>	SI <sup>1-2</sup>	I <sup>1-3</sup>
Flawless	Internally Flawless	Very Very Slightly Included	Very Slightly Included	Slightly Included	Included



February 4, 2026  
IGI Report Number **764612068**  
Description **NATURAL DIAMOND**  
Shape and Cutting Style **RECTANGULAR PRINCESS**  
Measurements **5.49 X 5.15 X 3.88 MM**  
**GRADING RESULTS**  
Carat Weight **1.03 CARAT**  
Color Grade **I**  
Clarity Grade **INTERNALLY FLAWLESS**  
Cut Grade **VERY GOOD**



**ADDITIONAL GRADING INFORMATION**

Polish **EXCELLENT**  
Symmetry **EXCELLENT**  
Fluorescence **VERY SLIGHT**  
Inscription(s) **764612068**



**IGI**



February 4, 2026  
IGI Report No. 764612068  
RECTANGULAR PRINCESS  
5.49 X 5.15 X 3.88 MM  
1.03 CARAT  
I  
VERY GOOD  
76.3%  
78%  
Very Thick  
Pointed  
EXCELLENT  
EXCELLENT  
VERY SLIGHT  
VERY SLIGHT  
IGI 764612068