



ELECTRONIC COPY

764612065
Report verification at igi.org



February 3, 2026
IGI Report Number **764612065**
Description **NATURAL DIAMOND**
Shape and Cutting Style **EMERALD CUT**
Measurements **7.67 X 5.40 X 3.69 MM**
GRADING RESULTS
Carat Weight **1.51 CARAT**
Color Grade **J**
Clarity Grade **INTERNALLY FLAWLESS**
Cut Grade **VERY GOOD**

DIAMOND REPORT

February 3, 2026
IGI Report Number **764612065**
Description **NATURAL DIAMOND**
Shape and Cutting Style **EMERALD CUT**
Measurements **7.67 X 5.40 X 3.69 MM**

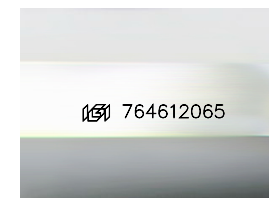
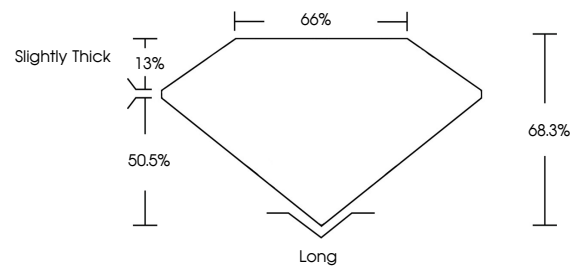
GRADING RESULTS

Carat Weight **1.51 CARAT**
Color Grade **J**
Clarity Grade **INTERNALLY FLAWLESS**
Cut Grade **VERY GOOD**

ADDITIONAL GRADING INFORMATION

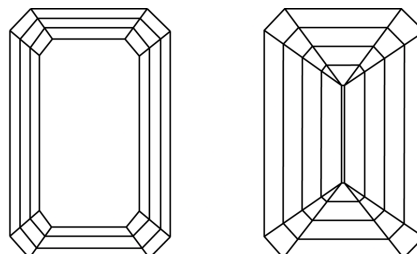
Polish **EXCELLENT**
Symmetry **EXCELLENT**
Fluorescence **VERY SLIGHT**
Inscription(s) **764612065**

PROPORTIONS



Sample Image Used

CLARITY CHARACTERISTICS



KEY TO SYMBOLS

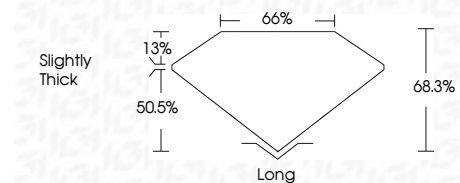
Red symbols indicate internal characteristics.
Green symbols indicate external characteristics.

COLOR

D - F	G - J	K - M	N - R	S - Z	FANCY
Colorless	Near Colorless	Slightly Tinted	Very Light Color	Light Color	

CLARITY

FL	IF	VVS ¹⁻²	VS ¹⁻²	SI ¹⁻²	I ¹⁻³
Flawless	Internally Flawless	Very Very Slightly Included	Very Slightly Included	Slightly Included	Included



ADDITIONAL GRADING INFORMATION

Polish **EXCELLENT**
Symmetry **EXCELLENT**
Fluorescence **VERY SLIGHT**
Inscription(s) **764612065**



IGI



February 3, 2026
IGI Report No 764612065
EMERALD CUT
1.51 CARAT
J
1.51 CARAT
J
VERY GOOD
68.3%
66%
Slightly Thick
Long
EXCELLENT
EXCELLENT
VERY SLIGHT
VERY SLIGHT
764612065