



ELECTRONIC COPY

764611857
Report verification at igi.org



January 29, 2026
IGI Report Number **764611857**
Description **NATURAL DIAMOND**
Shape and Cutting Style **PRINCESS CUT**
Measurements **5.38 X 5.35 X 3.83 MM**
GRADING RESULTS
Carat Weight **1.02 CARAT**
Color Grade **I**
Clarity Grade **INTERNALLY FLAWLESS**
Cut Grade **VERY GOOD**

DIAMOND REPORT

January 29, 2026
IGI Report Number **764611857**
Description **NATURAL DIAMOND**
Shape and Cutting Style **PRINCESS CUT**
Measurements **5.38 X 5.35 X 3.83 MM**

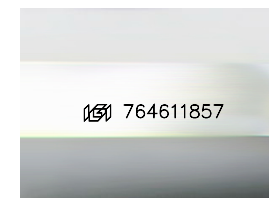
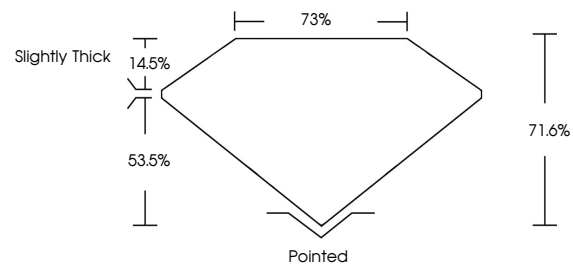
GRADING RESULTS

Carat Weight **1.02 CARAT**
Color Grade **I**
Clarity Grade **INTERNALLY FLAWLESS**
Cut Grade **VERY GOOD**

ADDITIONAL GRADING INFORMATION

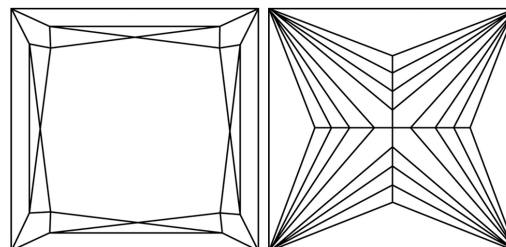
Polish **EXCELLENT**
Symmetry **EXCELLENT**
Fluorescence **VERY SLIGHT**
Inscription(s) **764611857**

PROPORTIONS



Sample Image Used

CLARITY CHARACTERISTICS



KEY TO SYMBOLS

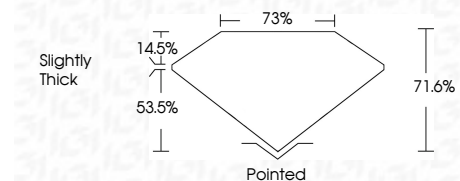
Red symbols indicate internal characteristics.
Green symbols indicate external characteristics.

COLOR

D - F	G - J	K - M	N - R	S - Z	FANCY
Colorless	Near Colorless	Slightly Tinted	Very Light Color	Light Color	

CLARITY

FL	IF	VVS ¹⁻²	VS ¹⁻²	SI ¹⁻²	I ¹⁻³
Flawless	Internally Flawless	Very Very Slightly Included	Very Slightly Included	Slightly Included	Included



ADDITIONAL GRADING INFORMATION

Polish **EXCELLENT**
Symmetry **EXCELLENT**
Fluorescence **VERY SLIGHT**
Inscription(s) **764611857**



IGI



January 29, 2026
IGI Report No 764611857
PRINCESS CUT
5.38 X 5.35 X 3.83 MM
1.02 CARAT
I
VERY GOOD
71.6%
73%
Slightly Thick
Pointed
EXCELLENT
EXCELLENT
VERY SLIGHT
764611857