



ELECTRONIC COPY

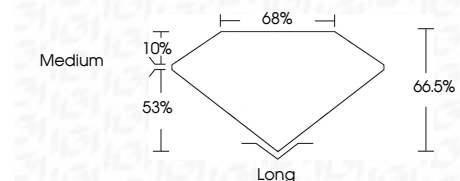
764611810
Report verification at igi.org



January 28, 2026
IGI Report Number **764611810**
Description **NATURAL DIAMOND**
Shape and Cutting Style **EMERALD CUT**
Measurements **6.89 X 4.78 X 3.18 MM**

GRADING RESULTS

Carat Weight **1.01 CARAT**
Color Grade **I**
Clarity Grade **VVS 1**
Cut Grade **VERY GOOD**



ADDITIONAL GRADING INFORMATION

Polish **EXCELLENT**
Symmetry **EXCELLENT**
Fluorescence **VERY SLIGHT**
Inscription(s) **IGI 764611810**



January 28, 2026
IGI Report No 764611810
EMERALD CUT
1.01 CARAT
6.89 X 4.78 X 3.18 MM
Carat Weight
Color Grade **I**
Clarity Grade **VVS 1**
Depth **66.5%**
Table **68%**
Girdle **Medium**
Culet **Long**
Polish **EXCELLENT**
Symmetry **EXCELLENT**
Fluorescence **VERY SLIGHT**
Inscription(s) **IGI 764611810**

DIAMOND REPORT

January 28, 2026
IGI Report Number **764611810**
Description **NATURAL DIAMOND**
Shape and Cutting Style **EMERALD CUT**
Measurements **6.89 X 4.78 X 3.18 MM**

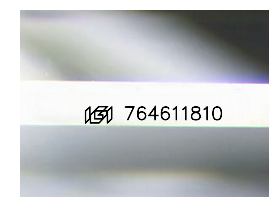
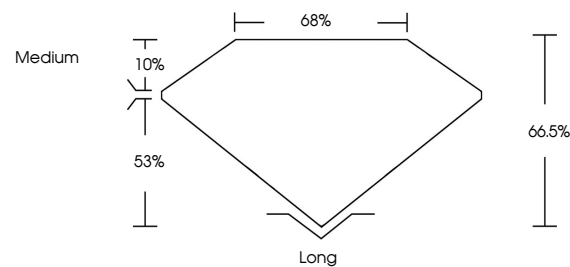
GRADING RESULTS

Carat Weight **1.01 CARAT**
Color Grade **I**
Clarity Grade **VVS 1**
Cut Grade **VERY GOOD**

ADDITIONAL GRADING INFORMATION

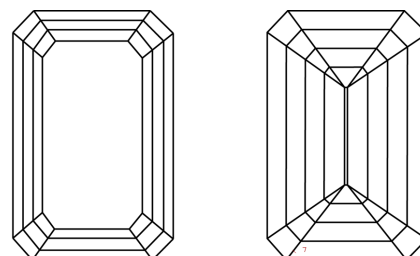
Polish **EXCELLENT**
Symmetry **EXCELLENT**
Fluorescence **VERY SLIGHT**
Inscription(s) **IGI 764611810**

PROPORTIONS



Sample Image Used

CLARITY CHARACTERISTICS



KEY TO SYMBOLS

Red symbols indicate internal characteristics.
Green symbols indicate external characteristics.

COLOR

| D - F | G - J | K - M | N - R | S - Z | FANCY |
|-----------|----------------|-----------------|------------------|-------------|-------|
| Colorless | Near Colorless | Slightly Tinted | Very Light Color | Light Color | |

CLARITY

| FL | IF | VVS 1-2 | VS 1-2 | SI 1-2 | I 1-3 |
|----------|---------------------|-----------------------------|------------------------|-------------------|----------|
| Flawless | Internally Flawless | Very Very Slightly Included | Very Slightly Included | Slightly Included | Included |

