



ELECTRONIC COPY

764611804
Report verification at igi.org

DIAMOND REPORT

January 28, 2026
IGI Report Number **764611804**
Description **NATURAL DIAMOND**
Shape and Cutting Style **SQUARE EMERALD CUT**
Measurements **5.27 X 5.26 X 3.78 MM**

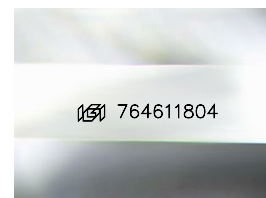
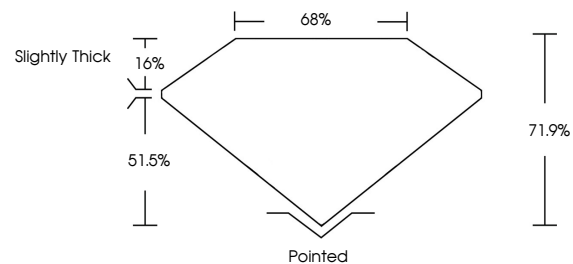
GRADING RESULTS

Carat Weight **1.00 CARAT**
Color Grade **K**
Clarity Grade **VVS 1**
Cut Grade **VERY GOOD**

ADDITIONAL GRADING INFORMATION

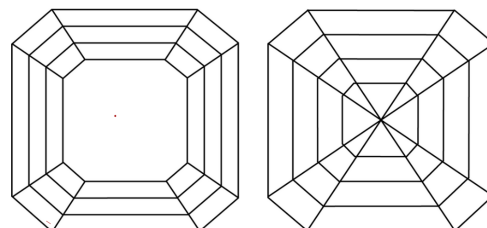
Polish **EXCELLENT**
Symmetry **EXCELLENT**
Fluorescence **VERY SLIGHT**
Inscription(s) **764611804**

PROPORTIONS



Sample Image Used

CLARITY CHARACTERISTICS



KEY TO SYMBOLS

Red symbols indicate internal characteristics.
Green symbols indicate external characteristics.

COLOR

D - F	G - J	K - M	N - R	S - Z	FANCY
Colorless	Near Colorless	Slightly Tinted	Very Light Color	Light Color	

CLARITY

FL	IF	VVS ¹⁻²	VS ¹⁻²	SI ¹⁻²	I ¹⁻³
Flawless	Internally Flawless	Very Very Slightly Included	Very Slightly Included	Slightly Included	Included



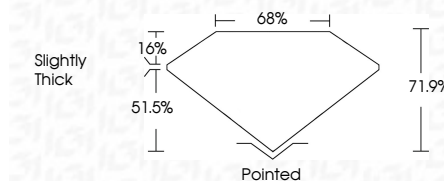
January 28, 2026
IGI Report Number **764611804**
Description **NATURAL DIAMOND**
Shape and Cutting Style **SQUARE EMERALD CUT**
Measurements **5.27 X 5.26 X 3.78 MM**

GRADING RESULTS

Carat Weight **1.00 CARAT**
Color Grade **K**
Clarity Grade **VVS 1**
Cut Grade **VERY GOOD**

ADDITIONAL GRADING INFORMATION

Polish **EXCELLENT**
Symmetry **EXCELLENT**
Fluorescence **VERY SLIGHT**
Inscription(s) **764611804**



IGI



January 28, 2026
IGI Report No 764611804
SQUARE EMERALD CUT
1.00 CARAT
Colorless
K
VVS 1
VERY GOOD
5.27 X 5.26 X 3.78 MM
71.9%
68%
Slightly Thick
Pointed
EXCELLENT
EXCELLENT
VERY SLIGHT
EXCELLENT
764611804