



ELECTRONIC COPY

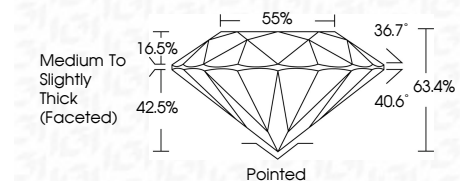
764611751
Report verification at igi.org



January 22, 2026
IGI Report Number **764611751**
Description **NATURAL DIAMOND**
Shape and Cutting Style **ROUND BRILLIANT**
Measurements **7.68 - 7.74 X 4.89 MM**

GRADING RESULTS

Carat Weight **1.81 CARAT**
Color Grade **J**
Clarity Grade **VS 1**
Cut Grade **EXCELLENT**



ADDITIONAL GRADING INFORMATION

Polish **EXCELLENT**
Symmetry **EXCELLENT**
Fluorescence **NONE**
Inscription(s) **IGI 764611751**



IGI

January 22, 2026
IGI Report No 764611751
ROUND BRILLIANT
1.81 CARAT
Color Grade **J**
Clarity Grade **VS 1**
Depth **63.4%**
Table **55%**
Girdle **Medium To Slightly Thick (Faceted)**
Culet **Pointed**
Polish **EXCELLENT**
Symmetry **EXCELLENT**
Fluorescence **NONE**
Inscriptions(s) **IGI 764611751**

DIAMOND REPORT

January 22, 2026
IGI Report Number **764611751**
Description **NATURAL DIAMOND**
Shape and Cutting Style **ROUND BRILLIANT**
Measurements **7.68 - 7.74 X 4.89 MM**

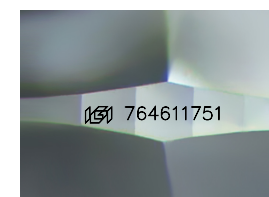
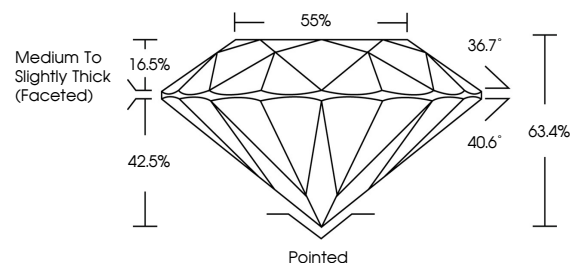
GRADING RESULTS

Carat Weight **1.81 CARAT**
Color Grade **J**
Clarity Grade **VS 1**
Cut Grade **EXCELLENT**

ADDITIONAL GRADING INFORMATION

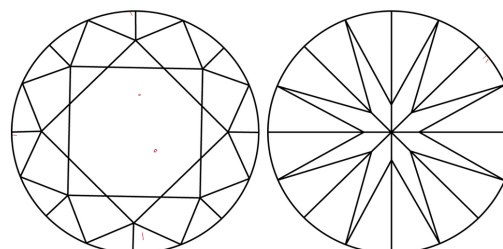
Polish **EXCELLENT**
Symmetry **EXCELLENT**
Fluorescence **NONE**
Inscription(s) **IGI 764611751**

PROPORTIONS



Sample Image Used

CLARITY CHARACTERISTICS



KEY TO SYMBOLS

Red symbols indicate internal characteristics.
Green symbols indicate external characteristics.

COLOR

| D - F | G - J | K - M | N - R | S - Z | FANCY |
|-----------|----------------|-----------------|------------------|-------------|-------|
| Colorless | Near Colorless | Slightly Tinted | Very Light Color | Light Color | |

CLARITY

| FL | IF | VVS 1-2 | VS 1-2 | SI 1-2 | I 1-3 |
|----------|---------------------|-----------------------------|------------------------|-------------------|----------|
| Flawless | Internally Flawless | Very Very Slightly Included | Very Slightly Included | Slightly Included | Included |

