



**ELECTRONIC COPY**

## DIAMOND REPORT

|                         |                       |
|-------------------------|-----------------------|
| January 22, 2026        |                       |
| IGI Report Number       | 764611677             |
| Description             | NATURAL DIAMOND       |
| Shape and Cutting Style | PRINCESS CUT          |
| Measurements            | 5.27 X 5.27 X 3.80 MM |

## GRADING RESULTS

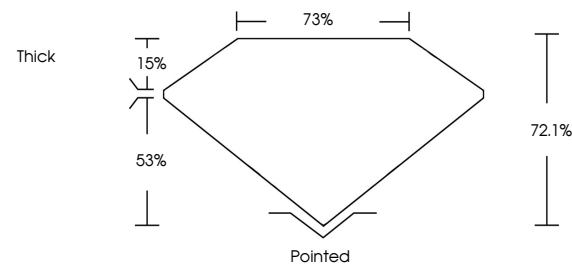
|               |            |
|---------------|------------|
| Carat Weight  | 1.01 CARAT |
| Color Grade   | K          |
| Clarity Grade | VVS 1      |
| Cut Grade     | VERY GOOD  |

### ADDITIONAL GRADING INFORMATION

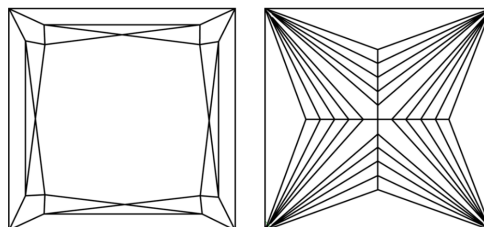
|                |               |
|----------------|---------------|
| Polish         | EXCELLENT     |
| Symmetry       | EXCELLENT     |
| Fluorescence   | VERY SLIGHT   |
| Inscription(s) | 151 764611677 |

764611677  
Report verification at [igi.org](https://igi.org)

## PROPORTIONS

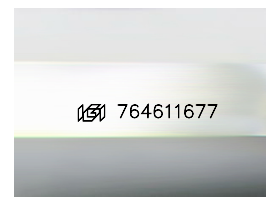


## CLARITY CHARACTERISTICS



## KEY TO SYMBOLS

Red symbols indicate internal characteristics.  
Green symbols indicate external characteristics.



Sample Image Used

**COLOR**

| D - F     | G - J          | K - M           | N - R            | S - Z       | FANCY |
|-----------|----------------|-----------------|------------------|-------------|-------|
| Colorless | Near Colorless | Slightly Tinted | Very Light Color | Light Color |       |

## CLARITY

| FL       | IF                  | VVS <sup>1-2</sup>          | VS <sup>1-2</sup>      | SI <sup>1-2</sup> | I <sup>1-3</sup> |
|----------|---------------------|-----------------------------|------------------------|-------------------|------------------|
| Flawless | Internally Flawless | Very Very Slightly Included | Very Slightly Included | Slightly Included | Included         |

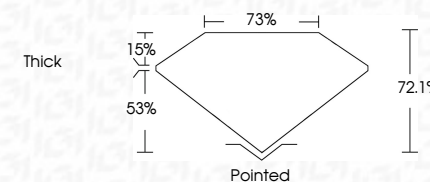
DIAMOND REPORT



|                         |                       |
|-------------------------|-----------------------|
| January 22, 2026        |                       |
| IGI Report Number       | 764611677             |
| Description             | NATURAL DIAMOND       |
| Shape and Cutting Style | PRINCESS CUT          |
| Measurements            | 5.27 X 5.27 X 3.80 MM |

## GRADING RESULTS

|               |            |
|---------------|------------|
| Carat Weight  | 1.01 CARAT |
| Color Grade   | K          |
| Clarity Grade | VVS 1      |
| Cut Grade     | VERY GOOD  |



### ADDITIONAL GRADING INFORMATION

|                |             |
|----------------|-------------|
| Polish         | EXCELLENT   |
| Symmetry       | EXCELLENT   |
| Fluorescence   | VERY SLIGHT |
| Inscription(s) | 15764611677 |



© IGI 2020, International Gemological Institute

FD - 10 20



THIS DOCUMENT WAS PRODUCED WITH THE FOLLOWING SECURITY MEASURES: SPECIAL DOCUMENT PAPER, INK SCREENS, WATERMARK, BACKGROUND DESIGNS, HOLOGRAM AND OTHER SECURITY FEATURES NOT LISTED AND DO EXCEED DOCUMENT SECURITY INDUSTRY GUIDELINE

**www.igi.org**

January 22, 2026  
GI Report No 7646  
PRINCESS CUT

|                       |             |
|-----------------------|-------------|
| 2.27 X 5.27 X 3.80 MM | 1.01 CARAT  |
| Carat Weight          | W81         |
| Color Grade           | VERY GOOD   |
| Clarity Grade         | 72.1%       |
| Cut Grade             | 75%         |
| Depth                 | Thick       |
| Table                 |             |
| Girdle                |             |
| Culet                 | Pointed     |
| Polish                | EXCELLENT   |
| Symmetry              | EXCELLENT   |
| Fluorescence          | VERY SLIGHT |