



ELECTRONIC COPY

764611563
Report verification at igi.org



January 22, 2026
IGI Report Number **764611563**
Description **NATURAL DIAMOND**
Shape and Cutting Style **PRINCESS CUT**
Measurements **6.24 X 6.23 X 4.35 MM**
GRADING RESULTS
Carat Weight **1.50 CARAT**
Color Grade **J**
Clarity Grade **VVS 1**
Cut Grade **VERY GOOD**

DIAMOND REPORT

January 22, 2026
IGI Report Number **764611563**
Description **NATURAL DIAMOND**
Shape and Cutting Style **PRINCESS CUT**
Measurements **6.24 X 6.23 X 4.35 MM**

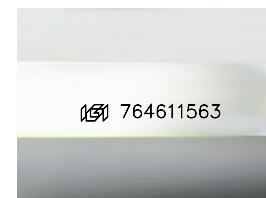
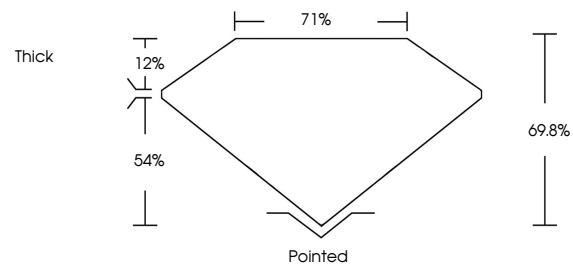
GRADING RESULTS

Carat Weight **1.50 CARAT**
Color Grade **J**
Clarity Grade **VVS 1**
Cut Grade **VERY GOOD**

ADDITIONAL GRADING INFORMATION

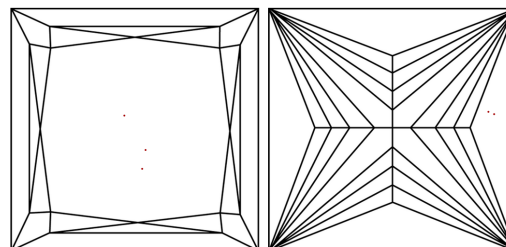
Polish **EXCELLENT**
Symmetry **EXCELLENT**
Fluorescence **VERY SLIGHT**
Inscription(s) **764611563**

PROPORTIONS



Sample Image Used

CLARITY CHARACTERISTICS



KEY TO SYMBOLS

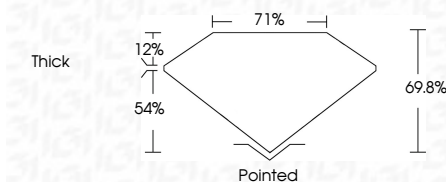
Red symbols indicate internal characteristics.
Green symbols indicate external characteristics.

COLOR

D - F	G - J	K - M	N - R	S - Z	FANCY
Colorless	Near Colorless	Slightly Tinted	Very Light Color	Light Color	

CLARITY

FL	IF	VVS ¹⁻²	VS ¹⁻²	SI ¹⁻²	I ¹⁻³
Flawless	Internally Flawless	Very Very Slightly Included	Very Slightly Included	Slightly Included	Included



ADDITIONAL GRADING INFORMATION

Polish **EXCELLENT**
Symmetry **EXCELLENT**
Fluorescence **VERY SLIGHT**
Inscription(s) **764611563**



IGI



January 22, 2026
IGI Report No 764611563
PRINCESS CUT
6.24 X 6.23 X 4.35 MM
1.50 CARAT
J
VVS 1
VERY GOOD
69.8%
71%
Thick
Pointed
EXCELLENT
EXCELLENT
VERY SLIGHT
EXCELLENT
764611563