



ELECTRONIC COPY

764611335
Report verification at igi.org



January 19, 2026
IGI Report Number **764611335**
Description **NATURAL DIAMOND**
Shape and Cutting Style **EMERALD CUT**
Measurements **6.35 X 4.61 X 3.37 MM**
GRADING RESULTS
Carat Weight **1.01 CARAT**
Color Grade **G**
Clarity Grade **INTERNALLY FLAWLESS**
Cut Grade **VERY GOOD**

DIAMOND REPORT

January 19, 2026
IGI Report Number **764611335**
Description **NATURAL DIAMOND**
Shape and Cutting Style **EMERALD CUT**
Measurements **6.35 X 4.61 X 3.37 MM**

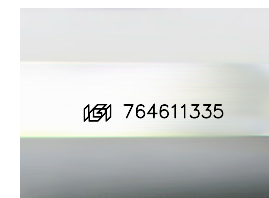
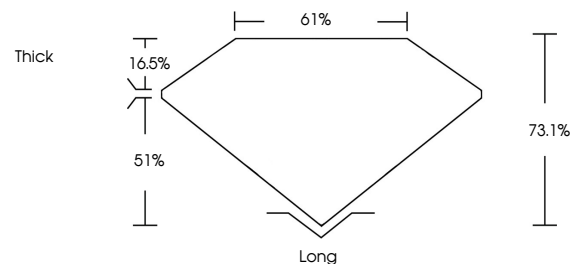
GRADING RESULTS

Carat Weight **1.01 CARAT**
Color Grade **G**
Clarity Grade **INTERNALLY FLAWLESS**
Cut Grade **VERY GOOD**

ADDITIONAL GRADING INFORMATION

Polish **EXCELLENT**
Symmetry **EXCELLENT**
Fluorescence **NONE**
Inscription(s) **764611335**

PROPORTIONS



Sample Image Used

CLARITY CHARACTERISTICS



KEY TO SYMBOLS

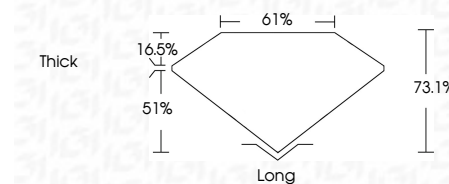
Red symbols indicate internal characteristics.
Green symbols indicate external characteristics.

COLOR

D - F	G - J	K - M	N - R	S - Z	FANCY
Colorless	Near Colorless	Slightly Tinted	Very Light Color	Light Color	

CLARITY

FL	IF	VVS ¹⁻²	VS ¹⁻²	SI ¹⁻²	I ¹⁻³
Flawless	Internally Flawless	Very Very Slightly Included	Very Slightly Included	Slightly Included	Included



ADDITIONAL GRADING INFORMATION

Polish **EXCELLENT**
Symmetry **EXCELLENT**
Fluorescence **NONE**
Inscription(s) **764611335**



IGI



January 19, 2026
IGI Report No 764611335
EMERALD CUT
6.35 X 4.61 X 3.37 MM
1.01 CARAT
Color Grade **G**
Clarity Grade **IF**
Cut Grade **VERY GOOD**
Depth **73.1%**
Table **61%**
Girdle **Thick**
Culet **None**
Polish **EXCELLENT**
Symmetry **EXCELLENT**
Fluorescence **NONE**
Inscription(s) **764611335**