



ELECTRONIC COPY

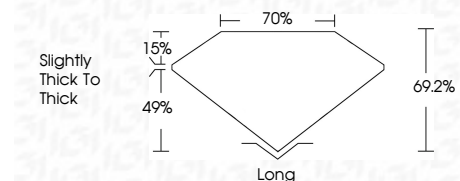
763629843
Report verification at igi.org



February 26, 2026
IGI Report Number **763629843**
Description **NATURAL DIAMOND**
Shape and Cutting Style **EMERALD CUT**
Measurements **6.39 X 4.65 X 3.22 MM**

GRADING RESULTS

Carat Weight **0.96 CARAT**
Color Grade **I**
Clarity Grade **VVS 2**
Cut Grade **VERY GOOD**



ADDITIONAL GRADING INFORMATION

Polish **EXCELLENT**
Symmetry **EXCELLENT**
Fluorescence **NONE**
Inscription(s) **IGI 763629843**



IGI

February 26, 2026
IGI Report No 763629843
EMERALD CUT
Carat Weight **0.96 CARAT**
Color Grade **I**
Clarity Grade **VVS 2**
Cut Grade **VERY GOOD**
Depth **69.2%**
Table **70%**
Girdle **Slightly Thick to Thick**
Culet **Long**
Polish **EXCELLENT**
Symmetry **EXCELLENT**
Fluorescence **NONE**
Inscription(s) **IGI 763629843**

DIAMOND REPORT

February 26, 2026
IGI Report Number **763629843**
Description **NATURAL DIAMOND**
Shape and Cutting Style **EMERALD CUT**
Measurements **6.39 X 4.65 X 3.22 MM**

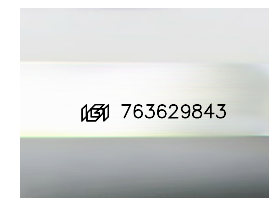
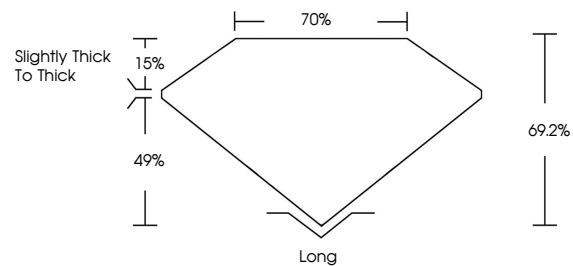
GRADING RESULTS

Carat Weight **0.96 CARAT**
Color Grade **I**
Clarity Grade **VVS 2**
Cut Grade **VERY GOOD**

ADDITIONAL GRADING INFORMATION

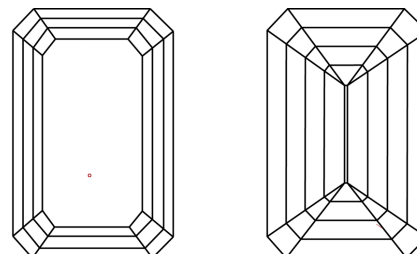
Polish **EXCELLENT**
Symmetry **EXCELLENT**
Fluorescence **NONE**
Inscription(s) **IGI 763629843**

PROPORTIONS



Sample Image Used

CLARITY CHARACTERISTICS



KEY TO SYMBOLS

Red symbols indicate internal characteristics.
Green symbols indicate external characteristics.

COLOR

D - F	G - J	K - M	N - R	S - Z	FANCY
Colorless	Near Colorless	Slightly Tinted	Very Light Color	Light Color	

CLARITY

FL	IF	VVS 1-2	VS 1-2	SI 1-2	I 1-3
Flawless	Internally Flawless	Very Very Slightly Included	Very Slightly Included	Slightly Included	Included

