



# INTERNATIONAL GEMOLOGICAL INSTITUTE

## DIAMOND REPORT

January 20, 2026  
IGI Report Number  
Description  
Shape and Cutting Style  
Measurements

**763624534**  
**NATURAL DIAMOND**  
**ROUND BRILLIANT**  
**5.64 - 5.68 X 3.53 MM**

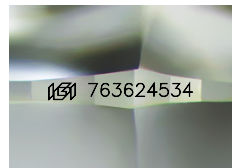
## GRADING RESULTS

Carat Weight **0.70 CARAT**  
Color Grade **D**  
Clarity Grade **VS 2**  
Cut Grade **EXCELLENT**

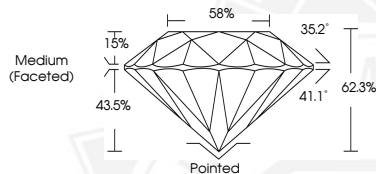
## ADDITIONAL GRADING INFORMATION

Polish **EXCELLENT**  
Symmetry **EXCELLENT**  
Fluorescence **NONE**  
Identification Features **FEATHER, CLOUD**  
Inscription(s) **IGI 763624534**  
Comments: IDEAL CUT ROUND BRILLIANT

ELECTRONIC COPY



Sample Image Used



THIS DOCUMENT WAS PRODUCED WITH THE FOLLOWING SECURITY MEASURES: SPECIAL DOCUMENT PAPER, INK SCREENS, WATERMARK, BACKGROUND DESIGNS, HOLOGRAM AND OTHER SECURITY FEATURES NOT LISTED AND DO EXCEED DOCUMENT SECURITY INDUSTRY GUIDELINES.

For terms & conditions and to verify this report, please visit [www.igi.org](http://www.igi.org)



January 20, 2026

IGI Report Number **763624534**

**ROUND BRILLIANT**

**NATURAL DIAMOND**

**5.64 - 5.68 X 3.53 MM**

Carat Weight **0.70 CARAT**

Color Grade **D**

Clarity Grade **VS 2**

Cut Grade **EXCELLENT**

Polish **EXCELLENT**

Symmetry **EXCELLENT**

Fluorescence **NONE**

Inscription(s) **IGI 763624534**

Comments: IDEAL CUT ROUND

**BRILLIANT**



January 20, 2026

IGI Report Number **763624534**

**ROUND BRILLIANT**

**NATURAL DIAMOND**

**5.64 - 5.68 X 3.53 MM**

Carat Weight **0.70 CARAT**

Color Grade **D**

Clarity Grade **VS 2**

Cut Grade **EXCELLENT**

Polish **EXCELLENT**

Symmetry **EXCELLENT**

Fluorescence **NONE**

Inscription(s) **IGI 763624534**

Comments: IDEAL CUT ROUND

**BRILLIANT**