



# INTERNATIONAL GEMOLOGICAL INSTITUTE

## DIAMOND REPORT

January 19, 2026  
IGI Report Number  
Description  
Shape and Cutting Style  
Measurements

**763624057**  
**NATURAL DIAMOND**  
**PRINCESS CUT**  
**4.32 X 4.29 X 3.17 MM**

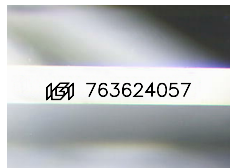
## GRADING RESULTS

Carat Weight **0.51 CARAT**  
Color Grade **G**  
Clarity Grade **VVS 1**  
Cut Grade **VERY GOOD**

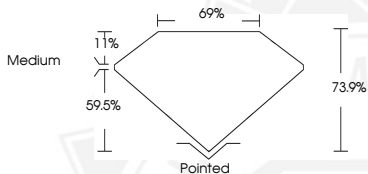
## ADDITIONAL GRADING INFORMATION

Polish **EXCELLENT**  
Symmetry **EXCELLENT**  
Fluorescence **NONE**  
Identification Features **CLOUD**  
Inscription(s) **IGI 763624057**

ELECTRONIC COPY



Sample Image Used



THIS DOCUMENT WAS PRODUCED WITH THE FOLLOWING SECURITY MEASURES: SPECIAL DOCUMENT PAPER, INK SCREENS, WATERMARK, BACKGROUND DESIGNS, HOLOGRAM AND OTHER SECURITY FEATURES NOT LISTED AND DO EXCEED DOCUMENT SECURITY INDUSTRY GUIDELINES.

For terms & conditions and to verify this report, please visit [www.igi.org](http://www.igi.org)



January 19, 2026  
IGI Report Number **763624057**  
**PRINCESS CUT**  
**NATURAL DIAMOND**  
**4.32 X 4.29 X 3.17 MM**  
Carat Weight **0.51 CARAT**  
Color Grade **G**  
Clarity Grade **VVS 1**  
Cut Grade **VERY GOOD**  
Polish **EXCELLENT**  
Symmetry **EXCELLENT**  
Fluorescence **NONE**  
Inscription(s) **IGI 763624057**



January 19, 2026  
IGI Report Number **763624057**  
**PRINCESS CUT**  
**NATURAL DIAMOND**  
**4.32 X 4.29 X 3.17 MM**  
Carat Weight **0.51 CARAT**  
Color Grade **G**  
Clarity Grade **VVS 1**  
Cut Grade **VERY GOOD**  
Polish **EXCELLENT**  
Symmetry **EXCELLENT**  
Fluorescence **NONE**  
Inscription(s) **IGI 763624057**