



# INTERNATIONAL GEMOLOGICAL INSTITUTE

## DIAMOND REPORT

January 19, 2026  
IGI Report Number  
Description  
Shape and Cutting Style  
Measurements

763623958  
NATURAL DIAMOND  
ROUND BRILLIANT  
4.71 - 4.74 X 2.93 MM

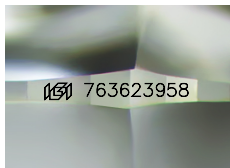
## GRADING RESULTS

Carat Weight 0.40 CARAT  
Color Grade G  
Clarity Grade VVS 1  
Cut Grade EXCELLENT

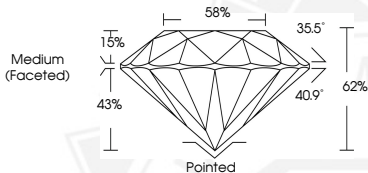
## ADDITIONAL GRADING INFORMATION

Polish EXCELLENT  
Symmetry EXCELLENT  
Fluorescence NONE  
Identification Features PINPOINT  
Inscription(s) IGI 763623958  
Comments: IDEAL CUT ROUND BRILLIANT

ELECTRONIC COPY



Sample Image Used



THIS DOCUMENT WAS PRODUCED WITH THE FOLLOWING SECURITY MEASURES: SPECIAL DOCUMENT PAPER, INK SCREENS, WATERMARK, BACKGROUND DESIGNS, HOLOGRAM AND OTHER SECURITY FEATURES NOT LISTED AND DO EXCEED DOCUMENT SECURITY INDUSTRY GUIDELINES.

For terms & conditions and to verify this report, please visit [www.igi.org](http://www.igi.org)



January 19, 2026

IGI Report Number 763623958

ROUND BRILLIANT

NATURAL DIAMOND

4.71 - 4.74 X 2.93 MM

Carat Weight 0.40 CARAT

Color Grade G

Clarity Grade VVS 1

Cut Grade EXCELLENT

Polish EXCELLENT

Symmetry EXCELLENT

Fluorescence NONE

Inscription(s) IGI 763623958

Comments: IDEAL CUT ROUND

BRILLIANT



January 19, 2026

IGI Report Number 763623958

ROUND BRILLIANT

NATURAL DIAMOND

4.71 - 4.74 X 2.93 MM

Carat Weight 0.40 CARAT

Color Grade G

Clarity Grade VVS 1

Cut Grade EXCELLENT

Polish EXCELLENT

Symmetry EXCELLENT

Fluorescence NONE

Inscription(s) IGI 763623958

Comments: IDEAL CUT ROUND

BRILLIANT