



# INTERNATIONAL GEMOLOGICAL INSTITUTE

## DIAMOND REPORT

January 19, 2026  
IGI Report Number  
Description  
Shape and Cutting Style  
Measurements

763623928  
NATURAL DIAMOND  
ROUND BRILLIANT  
5.13 - 5.17 X 3.22 MM

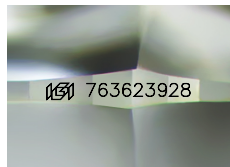
## GRADING RESULTS

Carat Weight 0.53 CARAT  
Color Grade G  
Clarity Grade VVS 2  
Cut Grade EXCELLENT

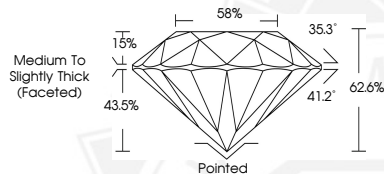
## ADDITIONAL GRADING INFORMATION

Polish EXCELLENT  
Symmetry EXCELLENT  
Fluorescence NONE  
Identification Features CRYSTAL, CLOUD, PINPOINT  
Inscription(s) (IGI) 763623928

ELECTRONIC COPY



Sample Image Used



THIS DOCUMENT WAS PRODUCED WITH THE FOLLOWING SECURITY MEASURES: SPECIAL DOCUMENT PAPER, INK SCREENS, WATERMARK, BACKGROUND DESIGNS, HOLOGRAM AND OTHER SECURITY FEATURES NOT LISTED AND DO EXCEED DOCUMENT SECURITY INDUSTRY GUIDELINES.

For terms & conditions and to verify this report, please visit [www.igi.org](http://www.igi.org)



January 19, 2026

IGI Report Number 763623928

ROUND BRILLIANT

NATURAL DIAMOND

5.13 - 5.17 X 3.22 MM

Carat Weight 0.53 CARAT

Color Grade G

Clarity Grade VVS 2

Cut Grade EXCELLENT

Polish EXCELLENT

Symmetry EXCELLENT

Fluorescence NONE

Inscription(s) (IGI) 763623928



January 19, 2026

IGI Report Number 763623928

ROUND BRILLIANT

NATURAL DIAMOND

5.13 - 5.17 X 3.22 MM

Carat Weight 0.53 CARAT

Color Grade G

Clarity Grade VVS 2

Cut Grade EXCELLENT

Polish EXCELLENT

Symmetry EXCELLENT

Fluorescence NONE

Inscription(s) (IGI) 763623928