



# INTERNATIONAL GEMOLOGICAL INSTITUTE

## DIAMOND REPORT

January 10, 2026  
IGI Report Number  
Description  
Shape and Cutting Style  
Measurements

**763623643**  
**NATURAL DIAMOND**  
**ROUND BRILLIANT**  
**4.66 - 4.70 X 2.94 MM**

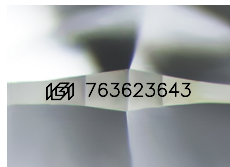
### GRADING RESULTS

Carat Weight **0.40 CARAT**  
Color Grade **G**  
Clarity Grade **VVS 1**  
Cut Grade **EXCELLENT**

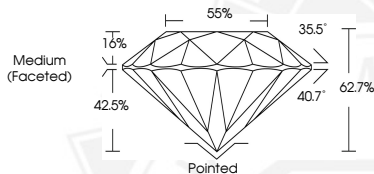
### ADDITIONAL GRADING INFORMATION

Polish **EXCELLENT**  
Symmetry **EXCELLENT**  
Fluorescence **NONE**  
Identification Features **FEATHER, INDENTED NATURAL**  
Inscription(s) **(IGI) 763623643**

ELECTRONIC COPY



Sample Image Used



THIS DOCUMENT WAS PRODUCED WITH THE FOLLOWING SECURITY MEASURES: SPECIAL DOCUMENT PAPER, INK SCREENS, WATERMARK, BACKGROUND DESIGNS, HOLOGRAM AND OTHER SECURITY FEATURES NOT LISTED AND DO EXCEED DOCUMENT SECURITY INDUSTRY GUIDELINES.

For terms & conditions and to verify this report, please visit [www.igi.org](http://www.igi.org)



January 10, 2026  
IGI Report Number **763623643**  
**ROUND BRILLIANT**  
**NATURAL DIAMOND**  
**4.66 - 4.70 X 2.94 MM**  
Carat Weight **0.40 CARAT**  
Color Grade **G**  
Clarity Grade **VVS 1**  
Cut Grade **EXCELLENT**  
Polish **EXCELLENT**  
Symmetry **EXCELLENT**  
Fluorescence **NONE**  
Inscription(s) **(IGI) 763623643**



January 10, 2026  
IGI Report Number **763623643**  
**ROUND BRILLIANT**  
**NATURAL DIAMOND**  
**4.66 - 4.70 X 2.94 MM**  
Carat Weight **0.40 CARAT**  
Color Grade **G**  
Clarity Grade **VVS 1**  
Cut Grade **EXCELLENT**  
Polish **EXCELLENT**  
Symmetry **EXCELLENT**  
Fluorescence **NONE**  
Inscription(s) **(IGI) 763623643**