



# INTERNATIONAL GEMOLOGICAL INSTITUTE

## DIAMOND REPORT

January 10, 2026  
IGI Report Number  
Description  
Shape and Cutting Style  
Measurements

**763623566**  
**NATURAL DIAMOND**  
**ROUND BRILLIANT**  
**5.19 - 5.22 X 3.13 MM**

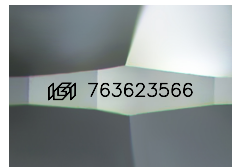
## GRADING RESULTS

Carat Weight **0.52 CARAT**  
Color Grade **F**  
Clarity Grade **VS 1**  
Cut Grade **EXCELLENT**

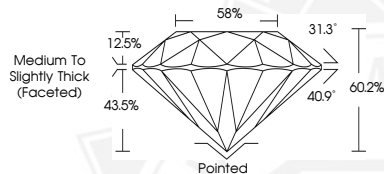
## ADDITIONAL GRADING INFORMATION

Polish **EXCELLENT**  
Symmetry **EXCELLENT**  
Fluorescence **NONE**  
Identification Features **CLOUD, FEATHER**  
Inscription(s) **IGI 763623566**

ELECTRONIC COPY



Sample Image Used



THIS DOCUMENT WAS PRODUCED WITH THE FOLLOWING SECURITY MEASURES: SPECIAL DOCUMENT PAPER, INK SCREENS, WATERMARK, BACKGROUND DESIGNS, HOLOGRAM AND OTHER SECURITY FEATURES NOT LISTED AND DO EXCEED DOCUMENT SECURITY INDUSTRY GUIDELINES.

For terms & conditions and to verify this report, please visit [www.igi.org](http://www.igi.org)



January 10, 2026  
IGI Report Number **763623566**  
**ROUND BRILLIANT**  
**NATURAL DIAMOND**  
**5.19 - 5.22 X 3.13 MM**  
Carat Weight **0.52 CARAT**  
Color Grade **F**  
Clarity Grade **VS 1**  
Cut Grade **EXCELLENT**  
Polish **EXCELLENT**  
Symmetry **EXCELLENT**  
Fluorescence **NONE**  
Inscription(s) **IGI 763623566**



January 10, 2026  
IGI Report Number **763623566**  
**ROUND BRILLIANT**  
**NATURAL DIAMOND**  
**5.19 - 5.22 X 3.13 MM**  
Carat Weight **0.52 CARAT**  
Color Grade **F**  
Clarity Grade **VS 1**  
Cut Grade **EXCELLENT**  
Polish **EXCELLENT**  
Symmetry **EXCELLENT**  
Fluorescence **NONE**  
Inscription(s) **IGI 763623566**