



# INTERNATIONAL GEMOLOGICAL INSTITUTE

## DIAMOND REPORT

January 10, 2026  
IGI Report Number  
Description  
Shape and Cutting Style  
Measurements

**763623504**  
**NATURAL DIAMOND**  
**ROUND BRILLIANT**  
**4.69 - 4.72 X 2.96 MM**

### GRADING RESULTS

Carat Weight  
Color Grade  
Clarity Grade  
Cut Grade

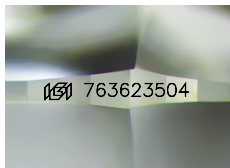
**0.40 CARAT**  
**F**  
**VVS 2**  
**EXCELLENT**

### ADDITIONAL GRADING INFORMATION

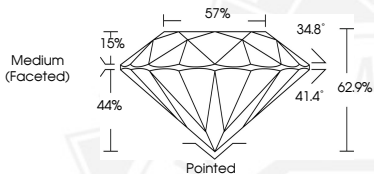
Polish  
Symmetry  
Fluorescence  
Identification Features  
Inscription(s)

**EXCELLENT**  
**EXCELLENT**  
**NONE**  
**FEATHER, CLOUD**  
**763623504**

ELECTRONIC COPY



Sample Image Used



THIS DOCUMENT WAS PRODUCED WITH THE FOLLOWING SECURITY MEASURES: SPECIAL DOCUMENT PAPER, INK SCREENS, WATERMARK, BACKGROUND DESIGNS, HOLOGRAM AND OTHER SECURITY FEATURES NOT LISTED AND DO EXCEED DOCUMENT SECURITY INDUSTRY GUIDELINES.

For terms & conditions and to verify this report, please visit [www.igi.org](http://www.igi.org)



January 10, 2026  
IGI Report Number **763623504**  
**ROUND BRILLIANT**  
**NATURAL DIAMOND**  
**4.69 - 4.72 X 2.96 MM**  
Carat Weight **0.40 CARAT**  
Color Grade **F**  
Clarity Grade **VVS 2**  
Cut Grade **EXCELLENT**  
Polish **EXCELLENT**  
Symmetry **EXCELLENT**  
Fluorescence **NONE**  
Inscription(s) **763623504**



January 10, 2026  
IGI Report Number **763623504**  
**ROUND BRILLIANT**  
**NATURAL DIAMOND**  
**4.69 - 4.72 X 2.96 MM**  
Carat Weight **0.40 CARAT**  
Color Grade **F**  
Clarity Grade **VVS 2**  
Cut Grade **EXCELLENT**  
Polish **EXCELLENT**  
Symmetry **EXCELLENT**  
Fluorescence **NONE**  
Inscription(s) **763623504**