



# INTERNATIONAL GEMOLOGICAL INSTITUTE

## DIAMOND REPORT

January 10, 2026  
IGI Report Number  
Description  
Shape and Cutting Style  
Measurements

763623371  
NATURAL DIAMOND  
ROUND BRILLIANT  
5.22 - 5.25 X 3.26 MM

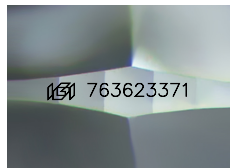
## GRADING RESULTS

Carat Weight 0.55 CARAT  
Color Grade H  
Clarity Grade VVS 2  
Cut Grade EXCELLENT

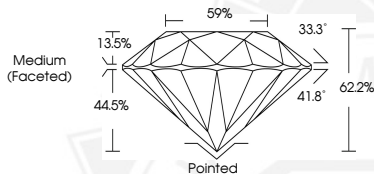
## ADDITIONAL GRADING INFORMATION

Polish EXCELLENT  
Symmetry EXCELLENT  
Fluorescence NONE  
Identification Features CRYSTAL  
Inscription(s) (IGI) 763623371

ELECTRONIC COPY



Sample Image Used



January 10, 2026  
IGI Report Number 763623371  
ROUND BRILLIANT  
NATURAL DIAMOND  
5.22 - 5.25 X 3.26 MM  
Carat Weight 0.55 CARAT  
Color Grade H  
Clarity Grade VVS 2  
Cut Grade EXCELLENT  
Polish EXCELLENT  
Symmetry EXCELLENT  
Fluorescence NONE  
Inscription(s) (IGI) 763623371



January 10, 2026  
IGI Report Number 763623371  
ROUND BRILLIANT  
NATURAL DIAMOND  
5.22 - 5.25 X 3.26 MM  
Carat Weight 0.55 CARAT  
Color Grade H  
Clarity Grade VVS 2  
Cut Grade EXCELLENT  
Polish EXCELLENT  
Symmetry EXCELLENT  
Fluorescence NONE  
Inscription(s) (IGI) 763623371



THIS DOCUMENT WAS PRODUCED WITH THE FOLLOWING SECURITY MEASURES: SPECIAL DOCUMENT PAPER, INK SCREENS, WATERMARK, BACKGROUND DESIGNS, HOLOGRAM AND OTHER SECURITY FEATURES NOT LISTED AND DO EXCEED DOCUMENT SECURITY INDUSTRY GUIDELINES.

For terms & conditions and to verify this report, please visit [www.igi.org](http://www.igi.org)