



INTERNATIONAL GEMOLOGICAL INSTITUTE

DIAMOND REPORT

January 10, 2026
IGI Report Number
Description
Shape and Cutting Style
Measurements

763623358
NATURAL DIAMOND
ROUND BRILLIANT
4.66 - 4.70 X 2.95 MM

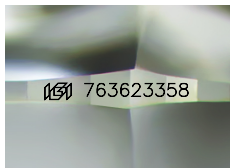
GRADING RESULTS

Carat Weight **0.40 CARAT**
Color Grade **F**
Clarity Grade **VVS 2**
Cut Grade **EXCELLENT**

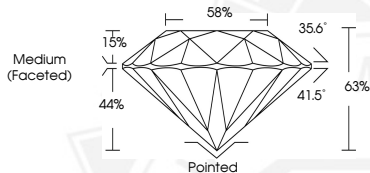
ADDITIONAL GRADING INFORMATION

Polish **EXCELLENT**
Symmetry **EXCELLENT**
Fluorescence **NONE**
Identification Features **CLOUD**
Inscription(s) **(IGI) 763623358**

ELECTRONIC COPY



Sample Image Used



THIS DOCUMENT WAS PRODUCED WITH THE FOLLOWING SECURITY MEASURES: SPECIAL DOCUMENT PAPER, INK SCREENS, WATERMARK, BACKGROUND DESIGNS, HOLOGRAM AND OTHER SECURITY FEATURES NOT LISTED AND DO EXCEED DOCUMENT SECURITY INDUSTRY GUIDELINES.

For terms & conditions and to verify this report, please visit www.igi.org



January 10, 2026
IGI Report Number **763623358**
ROUND BRILLIANT
NATURAL DIAMOND
4.66 - 4.70 X 2.95 MM
Carat Weight **0.40 CARAT**
Color Grade **F**
Clarity Grade **VVS 2**
Cut Grade **EXCELLENT**
Polish **EXCELLENT**
Symmetry **EXCELLENT**
Fluorescence **NONE**
Inscription(s) **(IGI) 763623358**



January 10, 2026
IGI Report Number **763623358**
ROUND BRILLIANT
NATURAL DIAMOND
4.66 - 4.70 X 2.95 MM
Carat Weight **0.40 CARAT**
Color Grade **F**
Clarity Grade **VVS 2**
Cut Grade **EXCELLENT**
Polish **EXCELLENT**
Symmetry **EXCELLENT**
Fluorescence **NONE**
Inscription(s) **(IGI) 763623358**