



INTERNATIONAL GEMOLOGICAL INSTITUTE

DIAMOND REPORT

January 17, 2026
IGI Report Number
Description
Shape and Cutting Style
Measurements

763621814
NATURAL DIAMOND
ROUND BRILLIANT
3.66 - 3.70 X 2.31 MM

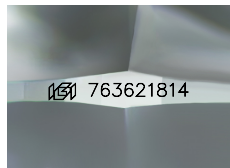
GRADING RESULTS

Carat Weight **0.19 CARAT**
Color Grade **I**
Clarity Grade **VVS 1**
Cut Grade **EXCELLENT**

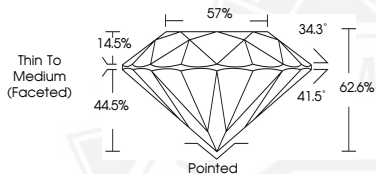
ADDITIONAL GRADING INFORMATION

Polish **EXCELLENT**
Symmetry **EXCELLENT**
Fluorescence **NONE**
Identification Features **PINPOINT**
Inscription(s) **IGI 763621814**

ELECTRONIC COPY



Sample Image Used



January 17, 2026
IGI Report Number **763621814**
ROUND BRILLIANT
NATURAL DIAMOND
3.66 - 3.70 X 2.31 MM
Carat Weight **0.19 CARAT**
Color Grade **I**
Clarity Grade **VVS 1**
Cut Grade **EXCELLENT**
Polish **EXCELLENT**
Symmetry **EXCELLENT**
Fluorescence **NONE**
Inscription(s) **IGI 763621814**



January 17, 2026
IGI Report Number **763621814**
ROUND BRILLIANT
NATURAL DIAMOND
3.66 - 3.70 X 2.31 MM
Carat Weight **0.19 CARAT**
Color Grade **I**
Clarity Grade **VVS 1**
Cut Grade **EXCELLENT**
Polish **EXCELLENT**
Symmetry **EXCELLENT**
Fluorescence **NONE**
Inscription(s) **IGI 763621814**



THIS DOCUMENT WAS PRODUCED WITH THE FOLLOWING SECURITY MEASURES: SPECIAL DOCUMENT PAPER, INK SCREENS, WATERMARK, BACKGROUND DESIGNS, HOLOGRAM AND OTHER SECURITY FEATURES NOT LISTED AND DO EXCEED DOCUMENT SECURITY INDUSTRY GUIDELINES.

For terms & conditions and to verify this report, please visit www.igi.org