



# INTERNATIONAL GEMOLOGICAL INSTITUTE

## DIAMOND REPORT

January 17, 2026  
IGI Report Number  
Description  
Shape and Cutting Style  
Measurements

**763621652**  
**NATURAL DIAMOND**  
**ROUND BRILLIANT**  
**3.63 - 3.64 X 2.26 MM**

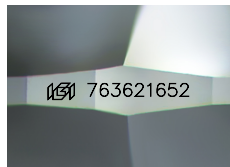
## GRADING RESULTS

Carat Weight **0.18 CARAT**  
Color Grade **F**  
Clarity Grade **INTERNALLY FLAWLESS**  
Cut Grade **EXCELLENT**

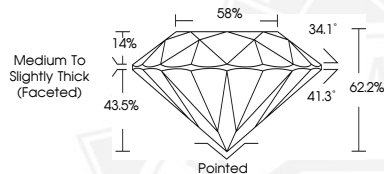
## ADDITIONAL GRADING INFORMATION

Polish **EXCELLENT**  
Symmetry **EXCELLENT**  
Fluorescence **NONE**  
Inscription(s) **IGI 763621652**  
Comments: IDEAL CUT ROUND BRILLIANT

ELECTRONIC COPY



Sample Image Used



THIS DOCUMENT WAS PRODUCED WITH THE FOLLOWING SECURITY MEASURES: SPECIAL DOCUMENT PAPER, INK SCREENS, WATERMARK, BACKGROUND DESIGNS, HOLOGRAM AND OTHER SECURITY FEATURES NOT LISTED AND DO EXCEED DOCUMENT SECURITY INDUSTRY GUIDELINES.

For terms & conditions and to verify this report, please visit [www.igi.org](http://www.igi.org)



January 17, 2026  
IGI Report Number **763621652**  
**ROUND BRILLIANT**  
**NATURAL DIAMOND**  
**3.63 - 3.64 X 2.26 MM**  
Carat Weight **0.18 CARAT**  
Color Grade **F**  
Clarity Grade **I.F.**  
Cut Grade **EXCELLENT**  
Polish **EXCELLENT**  
Symmetry **EXCELLENT**  
Fluorescence **NONE**  
Inscription(s) **IGI 763621652**  
Comments: IDEAL CUT ROUND BRILLIANT



January 17, 2026  
IGI Report Number **763621652**  
**ROUND BRILLIANT**  
**NATURAL DIAMOND**  
**3.63 - 3.64 X 2.26 MM**  
Carat Weight **0.18 CARAT**  
Color Grade **F**  
Clarity Grade **I.F.**  
Cut Grade **EXCELLENT**  
Polish **EXCELLENT**  
Symmetry **EXCELLENT**  
Fluorescence **NONE**  
Inscription(s) **IGI 763621652**  
Comments: IDEAL CUT ROUND BRILLIANT