



# INTERNATIONAL GEMOLOGICAL INSTITUTE

## DIAMOND REPORT

January 17, 2026  
IGI Report Number  
Description  
Shape and Cutting Style  
Measurements

**763621591**  
**NATURAL DIAMOND**  
**ROUND BRILLIANT**  
**3.85 - 3.88 X 2.41 MM**

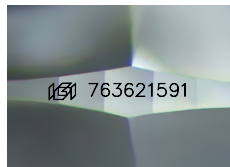
## GRADING RESULTS

Carat Weight **0.22 CARAT**  
Color Grade **G**  
Clarity Grade **VVS 1**  
Cut Grade **EXCELLENT**

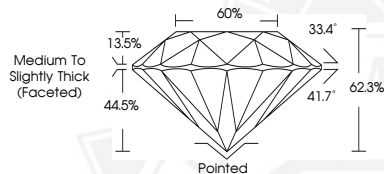
## ADDITIONAL GRADING INFORMATION

Polish **EXCELLENT**  
Symmetry **EXCELLENT**  
Fluorescence **NONE**  
Identification Features  
Inscription(s) **FEATHER, PINPOINT**  
**763621591**

ELECTRONIC COPY



Sample Image Used



THIS DOCUMENT WAS PRODUCED WITH THE FOLLOWING SECURITY MEASURES: SPECIAL DOCUMENT PAPER, INK SCREENS, WATERMARK, BACKGROUND DESIGNS, HOLOGRAM AND OTHER SECURITY FEATURES NOT LISTED AND DO EXCEED DOCUMENT SECURITY INDUSTRY GUIDELINES.

For terms & conditions and to verify this report, please visit [www.igi.org](http://www.igi.org)



January 17, 2026

IGI Report Number **763621591**

**ROUND BRILLIANT**

**NATURAL DIAMOND**

**3.85 - 3.88 X 2.41 MM**

Carat Weight **0.22 CARAT**

Color Grade **G**

Clarity Grade **VVS 1**

Cut Grade **EXCELLENT**

Polish **EXCELLENT**

Symmetry **EXCELLENT**

Fluorescence **NONE**

Inscription(s) **763621591**



January 17, 2026

IGI Report Number **763621591**

**ROUND BRILLIANT**

**NATURAL DIAMOND**

**3.85 - 3.88 X 2.41 MM**

Carat Weight **0.22 CARAT**

Color Grade **G**

Clarity Grade **VVS 1**

Cut Grade **EXCELLENT**

Polish **EXCELLENT**

Symmetry **EXCELLENT**

Fluorescence **NONE**

Inscription(s) **763621591**