



INTERNATIONAL GEMOLOGICAL INSTITUTE

DIAMOND REPORT

January 13, 2026
IGI Report Number
Description
Shape and Cutting Style
Measurements

763621216
NATURAL DIAMOND
ROUND BRILLIANT
3.67 - 3.71 X 2.26 MM

GRADING RESULTS

Carat Weight
Color Grade
Clarity Grade
Cut Grade

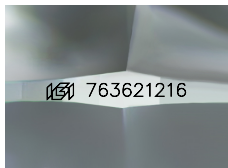
0.19 CARAT
H
INTERNALLY FLAWLESS
EXCELLENT

ADDITIONAL GRADING INFORMATION

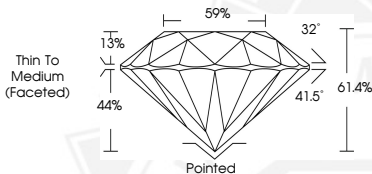
Polish
Symmetry
Fluorescence
Inscription(s)

EXCELLENT
EXCELLENT
NONE
IGI 763621216

ELECTRONIC COPY



Sample Image Used



THIS DOCUMENT WAS PRODUCED WITH THE FOLLOWING SECURITY MEASURES: SPECIAL DOCUMENT PAPER, INK SCREENS, WATERMARK, BACKGROUND DESIGNS, HOLOGRAM AND OTHER SECURITY FEATURES NOT LISTED AND DO EXCEED DOCUMENT SECURITY INDUSTRY GUIDELINES.

For terms & conditions and to verify this report, please visit www.igi.org



January 13, 2026

IGI Report Number 763621216

ROUND BRILLIANT

NATURAL DIAMOND

3.67 - 3.71 X 2.26 MM

Carat Weight 0.19 CARAT
Color Grade H
Clarity Grade I.F.
Cut Grade EXCELLENT
Polish EXCELLENT
Symmetry EXCELLENT
Fluorescence NONE
Inscription(s) IGI 763621216



January 13, 2026

IGI Report Number 763621216

ROUND BRILLIANT

NATURAL DIAMOND

3.67 - 3.71 X 2.26 MM

Carat Weight 0.19 CARAT
Color Grade H
Clarity Grade I.F.
Cut Grade EXCELLENT
Polish EXCELLENT
Symmetry EXCELLENT
Fluorescence NONE
Inscription(s) IGI 763621216