



# INTERNATIONAL GEMOLOGICAL INSTITUTE

## DIAMOND REPORT

January 13, 2026  
IGI Report Number  
Description  
Shape and Cutting Style  
Measurements

**763621118**  
**NATURAL DIAMOND**  
**ROUND BRILLIANT**  
**3.95 - 3.97 X 2.43 MM**

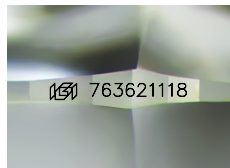
### GRADING RESULTS

Carat Weight **0.23 CARAT**  
Color Grade **F**  
Clarity Grade **VS 1**  
Cut Grade **EXCELLENT**

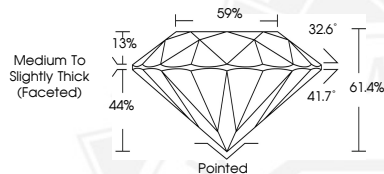
### ADDITIONAL GRADING INFORMATION

Polish **EXCELLENT**  
Symmetry **EXCELLENT**  
Fluorescence **NONE**  
Identification Features **CLOUD**  
Inscription(s) **(G) 763621118**

ELECTRONIC COPY



Sample Image Used



January 13, 2026  
IGI Report Number **763621118**  
**ROUND BRILLIANT**  
**NATURAL DIAMOND**  
**3.95 - 3.97 X 2.43 MM**  
Carat Weight **0.23 CARAT**  
Color Grade **F**  
Clarity Grade **VS 1**  
Cut Grade **EXCELLENT**  
Polish **EXCELLENT**  
Symmetry **EXCELLENT**  
Fluorescence **NONE**  
Inscription(s) **(G) 763621118**



January 13, 2026  
IGI Report Number **763621118**  
**ROUND BRILLIANT**  
**NATURAL DIAMOND**  
**3.95 - 3.97 X 2.43 MM**  
Carat Weight **0.23 CARAT**  
Color Grade **F**  
Clarity Grade **VS 1**  
Cut Grade **EXCELLENT**  
Polish **EXCELLENT**  
Symmetry **EXCELLENT**  
Fluorescence **NONE**  
Inscription(s) **(G) 763621118**



THIS DOCUMENT WAS PRODUCED WITH THE FOLLOWING SECURITY MEASURES: SPECIAL DOCUMENT PAPER, INK SCREENS, WATERMARK, BACKGROUND DESIGNS, HOLOGRAM AND OTHER SECURITY FEATURES NOT LISTED AND DO EXCEED DOCUMENT SECURITY INDUSTRY GUIDELINES.

For terms & conditions and to verify this report, please visit [www.igi.org](http://www.igi.org)