



ELECTRONIC COPY

762534921
Report verification at igi.org

DIAMOND REPORT

March 16, 2026
IGI Report Number **762534921**
Description **NATURAL DIAMOND**
Shape and Cutting Style **ROUND BRILLIANT**
Measurements **6.91 - 6.95 X 4.30 MM**

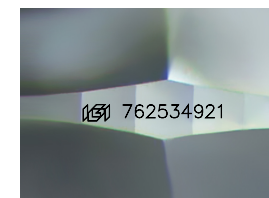
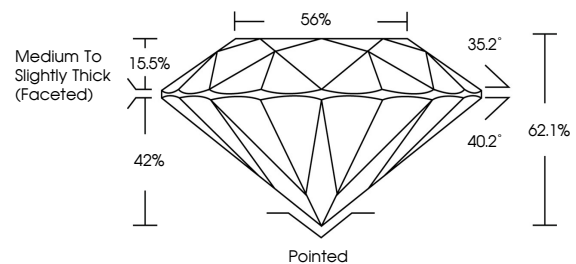
GRADING RESULTS

Carat Weight **1.30 CARAT**
Color Grade **K**
Clarity Grade **VS 1**
Cut Grade **EXCELLENT**

ADDITIONAL GRADING INFORMATION

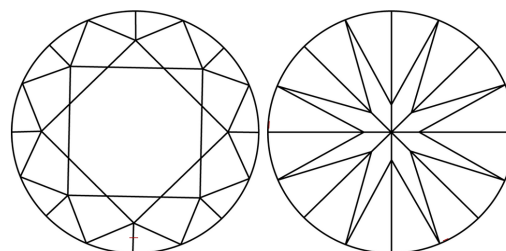
Polish **EXCELLENT**
Symmetry **EXCELLENT**
Fluorescence **NONE**
Inscription(s) **762534921**

PROPORTIONS



Sample Image Used

CLARITY CHARACTERISTICS



KEY TO SYMBOLS

Red symbols indicate internal characteristics.
Green symbols indicate external characteristics.

COLOR

D - F	G - J	K - M	N - R	S - Z	FANCY
Colorless	Near Colorless	Slightly Tinted	Very Light Color	Light Color	

CLARITY

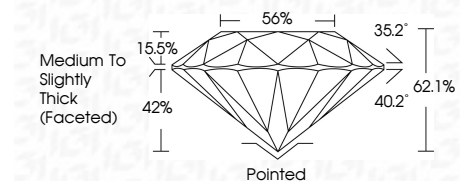
FL	IF	VVS 1-2	VS 1-2	SI 1-2	I 1-3
Flawless	Internally Flawless	Very Very Slightly Included	Very Slightly Included	Slightly Included	Included



March 16, 2026
IGI Report Number **762534921**
Description **NATURAL DIAMOND**
Shape and Cutting Style **ROUND BRILLIANT**
Measurements **6.91 - 6.95 X 4.30 MM**

GRADING RESULTS

Carat Weight **1.30 CARAT**
Color Grade **K**
Clarity Grade **VS 1**
Cut Grade **EXCELLENT**



ADDITIONAL GRADING INFORMATION

Polish **EXCELLENT**
Symmetry **EXCELLENT**
Fluorescence **NONE**
Inscription(s) **762534921**



IGI



March 16, 2026
IGI Report No 762534921
ROUND BRILLIANT
6.91 - 6.95 X 4.30 MM
1.30 CARAT
Color Grade **K**
Clarity Grade **VS 1**
Depth **EXCELLENT**
Table **62.1%**
Girdle **EXCELLENT**
Culet **Medium To Slightly Thick (Faceted)**
Polish **EXCELLENT**
Symmetry **EXCELLENT**
Fluorescence **NONE**
Inscriptions(s) **762534921**