



ELECTRONIC COPY

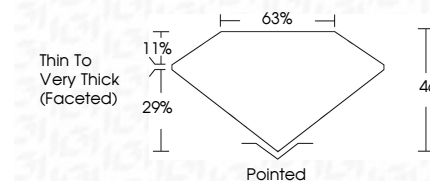
762534868
Report verification at igi.org



March 13, 2026
IGI Report Number **762534868**
Description **NATURAL DIAMOND**
Shape and Cutting Style **ROUND ROSE CUT**
Measurements **6.26 - 6.24 X 2.87 MM**

GRADING RESULTS

Carat Weight **1.01 CARAT**
Color Grade **J**
Clarity Grade **VS 2**
Cut Grade **VERY GOOD**



ADDITIONAL GRADING INFORMATION

Polish **EXCELLENT**
Symmetry **EXCELLENT**
Fluorescence **NONE**
Inscription(s) **(IGI) 762534868**



March 13, 2026
IGI Report No 762534868
ROUND ROSE CUT
6.26 - 6.24 X 2.87 MM
1.01 CARAT J
Color Grade VS 2
Clarity Grade VERY GOOD
Depth 46%
Table 63%
Girdle Thin To Very Thick (Faceted)
Culet Pointed
Polish EXCELLENT
Symmetry EXCELLENT
Fluorescence NONE
Inscriptions(s) (IGI) 762534868

DIAMOND REPORT

March 13, 2026
IGI Report Number **762534868**
Description **NATURAL DIAMOND**
Shape and Cutting Style **ROUND ROSE CUT**
Measurements **6.26 - 6.24 X 2.87 MM**

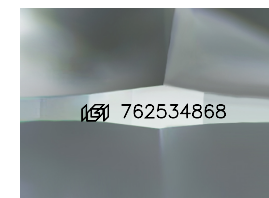
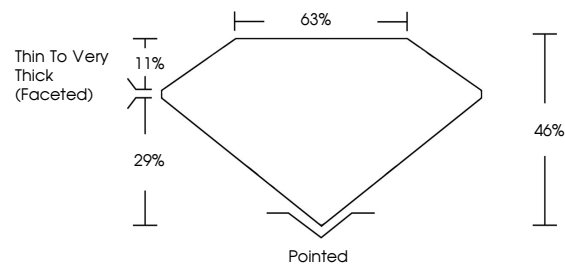
GRADING RESULTS

Carat Weight **1.01 CARAT**
Color Grade **J**
Clarity Grade **VS 2**
Cut Grade **VERY GOOD**

ADDITIONAL GRADING INFORMATION

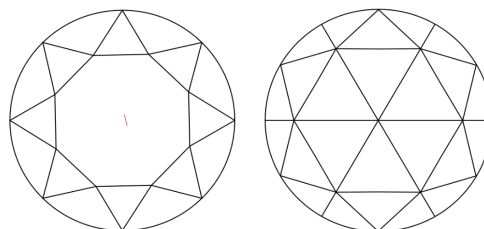
Polish **EXCELLENT**
Symmetry **EXCELLENT**
Fluorescence **NONE**
Inscription(s) **(IGI) 762534868**

PROPORTIONS



Sample Image Used

CLARITY CHARACTERISTICS



KEY TO SYMBOLS

Red symbols indicate internal characteristics.
Green symbols indicate external characteristics.

COLOR

D - F	G - J	K - M	N - R	S - Z	FANCY
Colorless	Near Colorless	Slightly Tinted	Very Light Color	Light Color	

CLARITY

FL	IF	VVS 1-2	VS 1-2	SI 1-2	I 1-3
Flawless	Internally Flawless	Very Very Slightly Included	Very Slightly Included	Slightly Included	Included

