



ELECTRONIC COPY

762534696
Report verification at igi.org



February 25, 2026
IGI Report Number **762534696**
Description **NATURAL DIAMOND**
Shape and Cutting Style **CUT CORNERED
RECTANGULAR MODIFIED
BRILLIANT**
Measurements **6.78 X 4.80 X 3.29 MM**
GRADING RESULTS
Carat Weight **1.02 CARAT**
Color Grade **J**
Clarity Grade **VVS 2**
Cut Grade **VERY GOOD**

DIAMOND REPORT

February 25, 2026
IGI Report Number **762534696**
Description **NATURAL DIAMOND**
Shape and Cutting Style **CUT CORNERED RECTANGULAR
MODIFIED BRILLIANT**
Measurements **6.78 X 4.80 X 3.29 MM**

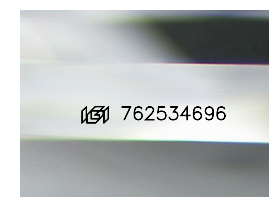
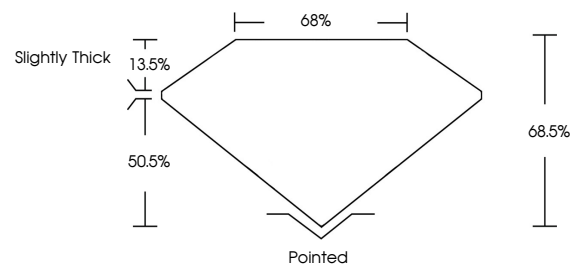
GRADING RESULTS

Carat Weight **1.02 CARAT**
Color Grade **J**
Clarity Grade **VVS 2**
Cut Grade **VERY GOOD**

ADDITIONAL GRADING INFORMATION

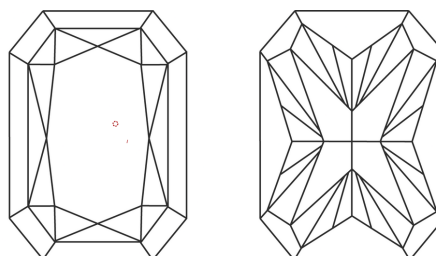
Polish **EXCELLENT**
Symmetry **EXCELLENT**
Fluorescence **NONE**
Inscription(s) **762534696**

PROPORTIONS



Sample Image Used

CLARITY CHARACTERISTICS



KEY TO SYMBOLS

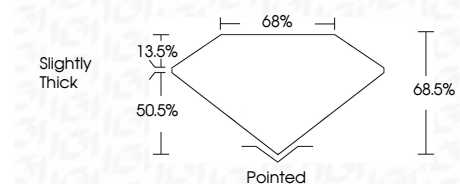
Red symbols indicate internal characteristics.
Green symbols indicate external characteristics.

COLOR

D - F	G - J	K - M	N - R	S - Z	FANCY
Colorless	Near Colorless	Slightly Tinted	Very Light Color	Light Color	

CLARITY

FL	IF	VVS ¹⁻²	VS ¹⁻²	SI ¹⁻²	I ¹⁻³
Flawless	Internally Flawless	Very Very Slightly Included	Very Slightly Included	Slightly Included	Included



ADDITIONAL GRADING INFORMATION

Polish **EXCELLENT**
Symmetry **EXCELLENT**
Fluorescence **NONE**
Inscription(s) **762534696**



IGI



February 25, 2026
IGI Report No 762534696
CUT CORNERED RECT. MODIFIED BRILLIANT
6.78 X 4.80 X 3.29 MM
1.02 CARAT
J
VVS 2
VERY GOOD
68.5%
68%
Slightly Thick
Pointed
EXCELLENT
EXCELLENT
NONE
NONE
 762534696