



ELECTRONIC COPY

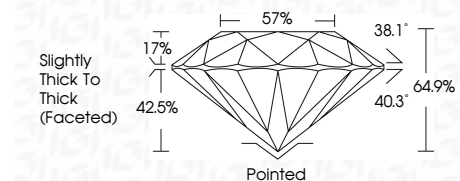
762534664
Report verification at igi.org



February 24, 2026
IGI Report Number **762534664**
Description **NATURAL DIAMOND**
Shape and Cutting Style **ROUND BRILLIANT**
Measurements **6.18 - 6.22 X 4.03 MM**

GRADING RESULTS

Carat Weight **1.00 CARAT**
Color Grade **I**
Clarity Grade **SI 2**
Cut Grade **VERY GOOD**



ADDITIONAL GRADING INFORMATION

Polish **EXCELLENT**
Symmetry **VERY GOOD**
Fluorescence **VERY SLIGHT**
Inscription(s) **IGI 762534664**



IGI

February 24, 2026
IGI Report No 762534664
ROUND BRILLIANT
6.18 - 6.22 X 4.03 MM
1.00 CARAT
I
SI 2
VERY GOOD
64.9%
57%
Slightly Thick To Thick (Faceted)
Pointed
EXCELLENT
VERY GOOD
VERY SLIGHT
IGI 762534664

DIAMOND REPORT

February 24, 2026
IGI Report Number **762534664**
Description **NATURAL DIAMOND**
Shape and Cutting Style **ROUND BRILLIANT**
Measurements **6.18 - 6.22 X 4.03 MM**

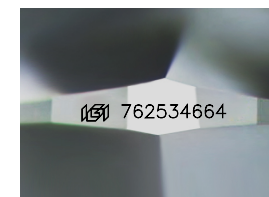
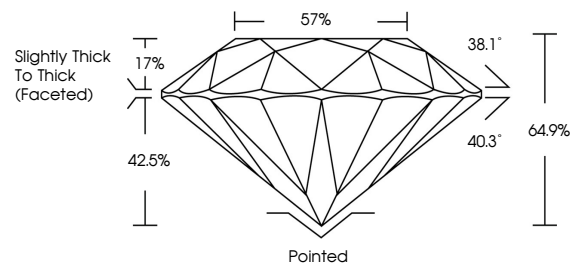
GRADING RESULTS

Carat Weight **1.00 CARAT**
Color Grade **I**
Clarity Grade **SI 2**
Cut Grade **VERY GOOD**

ADDITIONAL GRADING INFORMATION

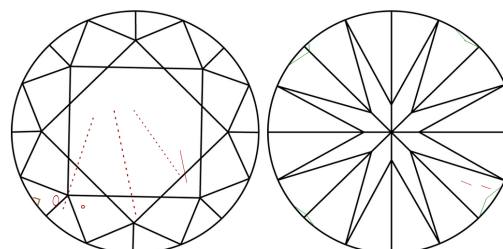
Polish **EXCELLENT**
Symmetry **VERY GOOD**
Fluorescence **VERY SLIGHT**
Inscription(s) **IGI 762534664**

PROPORTIONS



Sample Image Used

CLARITY CHARACTERISTICS



KEY TO SYMBOLS

Red symbols indicate internal characteristics.
Green symbols indicate external characteristics.

COLOR

| D - F | G - J | K - M | N - R | S - Z | FANCY |
|-----------|----------------|-----------------|------------------|-------------|-------|
| Colorless | Near Colorless | Slightly Tinted | Very Light Color | Light Color | |

CLARITY

| FL | IF | VVS ¹⁻² | VS ¹⁻² | SI ¹⁻² | I ¹⁻³ |
|----------|---------------------|-----------------------------|------------------------|-------------------|------------------|
| Flawless | Internally Flawless | Very Very Slightly Included | Very Slightly Included | Slightly Included | Included |

