



ELECTRONIC COPY

762516180
Report verification at igi.org



April 17, 2026

IGI Report Number **762516180**

Description **NATURAL DIAMOND**

Shape and Cutting Style **PRINCESS CUT**

Measurements **5.76 X 5.74 X 4.22 MM**

GRADING RESULTS

Carat Weight **1.25 CARAT**

Color Grade **I**

Clarity Grade **VVS 1**

Cut Grade **VERY GOOD**

April 17, 2026
IGI Report Number **762516180**
Description **NATURAL DIAMOND**
Shape and Cutting Style **PRINCESS CUT**
Measurements **5.76 X 5.74 X 4.22 MM**

GRADING RESULTS

Carat Weight **1.25 CARAT**

Color Grade **I**

Clarity Grade **VVS 1**

Cut Grade **VERY GOOD**

ADDITIONAL GRADING INFORMATION

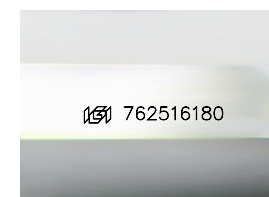
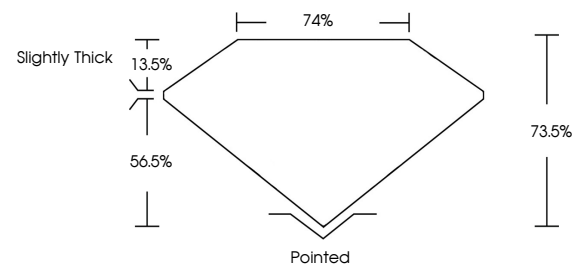
Polish **EXCELLENT**

Symmetry **EXCELLENT**

Fluorescence **NONE**

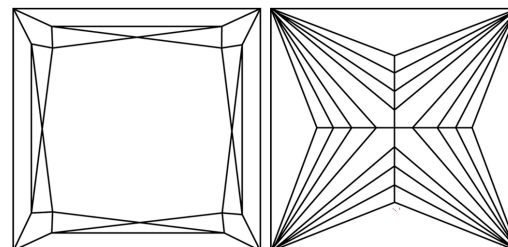
Inscription(s) **762516180**

PROPORTIONS



Sample Image Used

CLARITY CHARACTERISTICS



KEY TO SYMBOLS

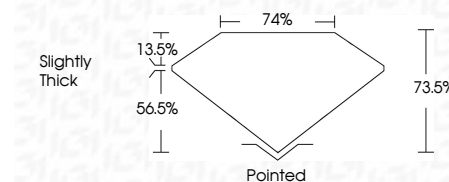
Red symbols indicate internal characteristics.
Green symbols indicate external characteristics.

COLOR

| D - F | G - J | K - M | N - R | S - Z | FANCY |
|-----------|----------------|-----------------|------------------|-------------|-------|
| Colorless | Near Colorless | Slightly Tinted | Very Light Color | Light Color | |

CLARITY

| FL | IF | VVS ¹⁻² | VS ¹⁻² | SI ¹⁻² | I ¹⁻³ |
|----------|---------------------|-----------------------------|------------------------|-------------------|------------------|
| Flawless | Internally Flawless | Very Very Slightly Included | Very Slightly Included | Slightly Included | Included |



ADDITIONAL GRADING INFORMATION

Polish **EXCELLENT**

Symmetry **EXCELLENT**

Fluorescence **NONE**

Inscription(s) **762516180**



IGI



April 17, 2026
IGI Report No 762516180
PRINCESS CUT
5.76 X 5.74 X 4.22 MM
1.25 CARAT
I
VVS 1
VERY GOOD
73.5%
74%
Slightly Thick
Pointed
EXCELLENT
EXCELLENT
NONE
762516180