



**ELECTRONIC COPY**

762515700  
Report verification at [igi.org](http://igi.org)

**DIAMOND REPORT**

February 12, 2026  
IGI Report Number **762515700**  
Description **NATURAL DIAMOND**  
Shape and Cutting Style **PRINCESS CUT**  
Measurements **5.53 X 5.41 X 3.98 MM**

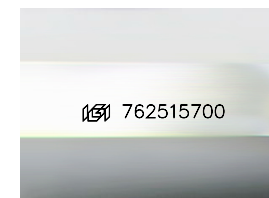
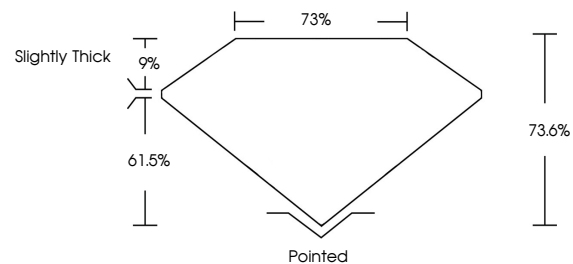
**GRADING RESULTS**

Carat Weight **1.01 CARAT**  
Color Grade **H**  
Clarity Grade **VVS 1**  
Cut Grade **VERY GOOD**

**ADDITIONAL GRADING INFORMATION**

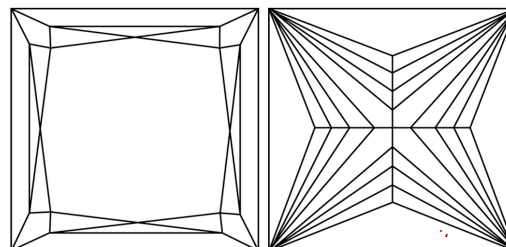
Polish **EXCELLENT**  
Symmetry **EXCELLENT**  
Fluorescence **NONE**  
Inscription(s) **762515700**

**PROPORTIONS**



Sample Image Used

**CLARITY CHARACTERISTICS**



**KEY TO SYMBOLS**

Red symbols indicate internal characteristics.  
Green symbols indicate external characteristics.

**COLOR**

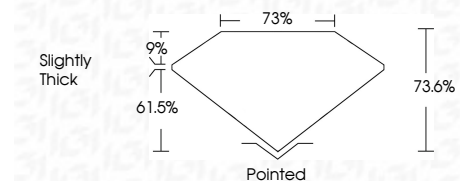
D - F	G - J	K - M	N - R	S - Z	FANCY
Colorless	Near Colorless	Slightly Tinted	Very Light Color	Light Color	

**CLARITY**

FL	IF	VVS 1-2	VS 1-2	SI 1-2	I 1-3
Flawless	Internally Flawless	Very Very Slightly Included	Very Slightly Included	Slightly Included	Included



February 12, 2026  
IGI Report Number **762515700**  
Description **NATURAL DIAMOND**  
Shape and Cutting Style **PRINCESS CUT**  
Measurements **5.53 X 5.41 X 3.98 MM**  
**GRADING RESULTS**  
Carat Weight **1.01 CARAT**  
Color Grade **H**  
Clarity Grade **VVS 1**  
Cut Grade **VERY GOOD**



**ADDITIONAL GRADING INFORMATION**

Polish **EXCELLENT**  
Symmetry **EXCELLENT**  
Fluorescence **NONE**  
Inscription(s) **762515700**



**IGI**



February 12, 2026  
IGI Report No 762515700  
**PRINCESS CUT**  
5.53 X 5.41 X 3.98 MM  
1.01 CARAT  
H  
VVS 1  
VERY GOOD  
73.6%  
73%  
Slightly Thick  
Pointed  
EXCELLENT  
EXCELLENT  
NONE  
 762515700