



INTERNATIONAL GEMOLOGICAL INSTITUTE

DIAMOND REPORT

January 19, 2026
IGI Report Number
Description
Shape and Cutting Style
Measurements

761531951
NATURAL DIAMOND
ROUND BRILLIANT
5.62 - 5.66 X 3.55 MM

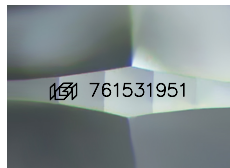
GRADING RESULTS

Carat Weight **0.70 CARAT**
Color Grade **I**
Clarity Grade **VVS 1**
Cut Grade **EXCELLENT**

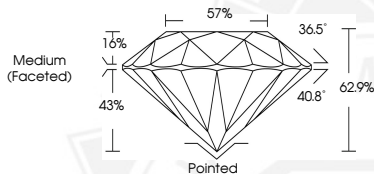
ADDITIONAL GRADING INFORMATION

Polish **EXCELLENT**
Symmetry **EXCELLENT**
Fluorescence **VERY SLIGHT**
Identification Features **PINPOINT**
Inscription(s) **IGI 761531951**

ELECTRONIC COPY



Sample Image Used



January 19, 2026
IGI Report Number **761531951**
ROUND BRILLIANT
NATURAL DIAMOND
5.62 - 5.66 X 3.55 MM
Carat Weight **0.70 CARAT**
Color Grade **I**
Clarity Grade **VVS 1**
Cut Grade **EXCELLENT**
Polish **EXCELLENT**
Symmetry **EXCELLENT**
Fluorescence **VERY SLIGHT**
Inscription(s) **IGI 761531951**



January 19, 2026
IGI Report Number **761531951**
ROUND BRILLIANT
NATURAL DIAMOND
5.62 - 5.66 X 3.55 MM
Carat Weight **0.70 CARAT**
Color Grade **I**
Clarity Grade **VVS 1**
Cut Grade **EXCELLENT**
Polish **EXCELLENT**
Symmetry **EXCELLENT**
Fluorescence **VERY SLIGHT**
Inscription(s) **IGI 761531951**



THIS DOCUMENT WAS PRODUCED WITH THE FOLLOWING SECURITY MEASURES: SPECIAL DOCUMENT PAPER, INK SCREENS, WATERMARK, BACKGROUND DESIGNS, HOLOGRAM AND OTHER SECURITY FEATURES NOT LISTED AND DO EXCEED DOCUMENT SECURITY INDUSTRY GUIDELINES.

For terms & conditions and to verify this report, please visit www.igi.org