



ELECTRONIC COPY

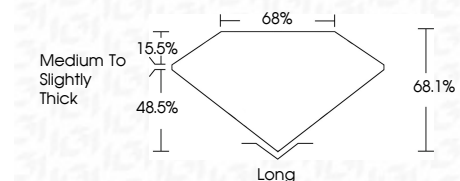
760540615
Report verification at igi.org



January 12, 2026
IGI Report Number **760540615**
Description **NATURAL DIAMOND**
Shape and Cutting Style **EMERALD CUT**
Measurements **7.76 X 5.36 X 3.65 MM**

GRADING RESULTS

Carat Weight **1.54 CARAT**
Color Grade **J**
Clarity Grade **VVS 2**
Cut Grade **VERY GOOD**



ADDITIONAL GRADING INFORMATION

Polish **EXCELLENT**
Symmetry **EXCELLENT**
Fluorescence **VERY SLIGHT**
Inscription(s) **(IGI) 760540615**



IGI

DIAMOND REPORT

January 12, 2026
IGI Report Number **760540615**
Description **NATURAL DIAMOND**
Shape and Cutting Style **EMERALD CUT**
Measurements **7.76 X 5.36 X 3.65 MM**

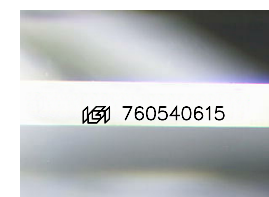
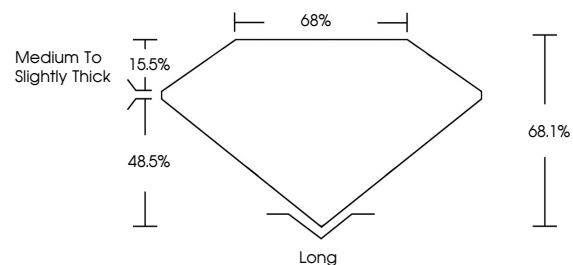
GRADING RESULTS

Carat Weight **1.54 CARAT**
Color Grade **J**
Clarity Grade **VVS 2**
Cut Grade **VERY GOOD**

ADDITIONAL GRADING INFORMATION

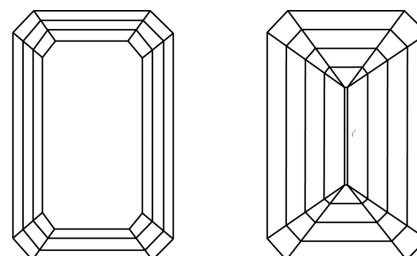
Polish **EXCELLENT**
Symmetry **EXCELLENT**
Fluorescence **VERY SLIGHT**
Inscription(s) **(IGI) 760540615**

PROPORTIONS



Sample Image Used

CLARITY CHARACTERISTICS



KEY TO SYMBOLS

Red symbols indicate internal characteristics.
Green symbols indicate external characteristics.

COLOR

D - F	G - J	K - M	N - R	S - Z	FANCY
Colorless	Near Colorless	Slightly Tinted	Very Light Color	Light Color	

CLARITY

FL	IF	VVS 1-2	VS 1-2	SI 1-2	I 1-3
Flawless	Internally Flawless	Very Very Slightly Included	Very Slightly Included	Slightly Included	Included



January 12, 2026
IGI Report No 760540615
EMERALD CUT

1.54 CARAT
J

7.76 X 5.36 X 3.65 MM

VVS 2
VERY GOOD

68.1%
68%

Medium To Slightly Thick

Long
EXCELLENT
EXCELLENT
VERY SLIGHT
EXCELLENT

Polish
Symmetry
Fluorescence
Inscription(s)

(IGI) 760540615