



ELECTRONIC COPY

760540473
Report verification at igi.org

DIAMOND REPORT

January 10, 2026
IGI Report Number **760540473**
Description **NATURAL DIAMOND**
Shape and Cutting Style **EMERALD CUT**
Measurements **6.75 X 4.89 X 3.59 MM**

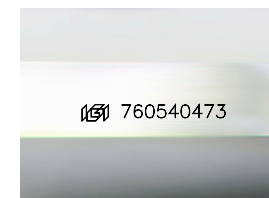
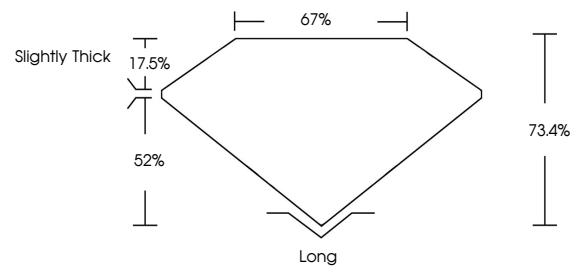
GRADING RESULTS

Carat Weight **1.21 CARAT**
Color Grade **H**
Clarity Grade **VS 1**
Cut Grade **VERY GOOD**

ADDITIONAL GRADING INFORMATION

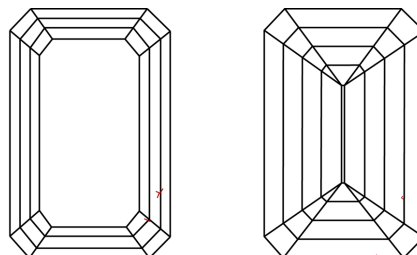
Polish **EXCELLENT**
Symmetry **EXCELLENT**
Fluorescence **NONE**
Inscription(s) **760540473**

PROPORTIONS



Sample Image Used

CLARITY CHARACTERISTICS



KEY TO SYMBOLS

Red symbols indicate internal characteristics.
Green symbols indicate external characteristics.

COLOR

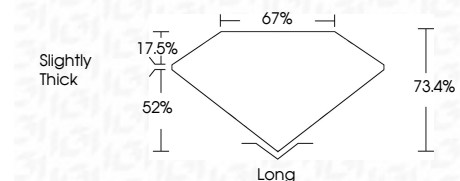
D - F	G - J	K - M	N - R	S - Z	FANCY
Colorless	Near Colorless	Slightly Tinted	Very Light Color	Light Color	

CLARITY

FL	IF	VVS 1-2	VS 1-2	SI 1-2	I 1-3
Flawless	Internally Flawless	Very Very Slightly Included	Very Slightly Included	Slightly Included	Included



January 10, 2026
IGI Report Number **760540473**
Description **NATURAL DIAMOND**
Shape and Cutting Style **EMERALD CUT**
Measurements **6.75 X 4.89 X 3.59 MM**
GRADING RESULTS
Carat Weight **1.21 CARAT**
Color Grade **H**
Clarity Grade **VS 1**
Cut Grade **VERY GOOD**



ADDITIONAL GRADING INFORMATION

Polish **EXCELLENT**
Symmetry **EXCELLENT**
Fluorescence **NONE**
Inscription(s) **760540473**



IGI



January 10, 2026
IGI Report No 760540473
EMERALD CUT
6.75 X 4.89 X 3.59 MM
1.21 CARAT
H
Color Grade
VS 1
VERY GOOD
73.4%
67%
Slightly Thick
Long
EXCELLENT
EXCELLENT
NONE
NONE
 760540473