



ELECTRONIC COPY

760540295
Report verification at igi.org



January 7, 2026
IGI Report Number **760540295**
Description **NATURAL DIAMOND**
Shape and Cutting Style **EMERALD CUT**
Measurements **9.21 X 6.67 X 4.81 MM**
GRADING RESULTS
Carat Weight **3.03 CARATS**
Color Grade **H**
Clarity Grade **INTERNALLY FLAWLESS**
Cut Grade **VERY GOOD**

DIAMOND REPORT

January 7, 2026
IGI Report Number **760540295**
Description **NATURAL DIAMOND**
Shape and Cutting Style **EMERALD CUT**
Measurements **9.21 X 6.67 X 4.81 MM**

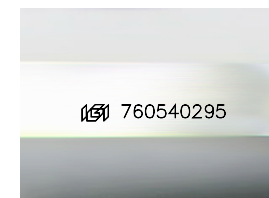
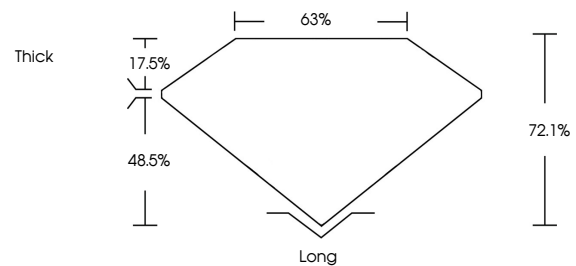
GRADING RESULTS

Carat Weight **3.03 CARATS**
Color Grade **H**
Clarity Grade **INTERNALLY FLAWLESS**
Cut Grade **VERY GOOD**

ADDITIONAL GRADING INFORMATION

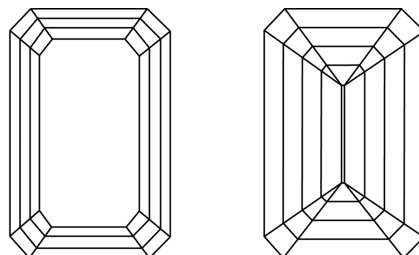
Polish **EXCELLENT**
Symmetry **EXCELLENT**
Fluorescence **STRONG**
Inscription(s) **760540295**

PROPORTIONS



Sample Image Used

CLARITY CHARACTERISTICS



KEY TO SYMBOLS

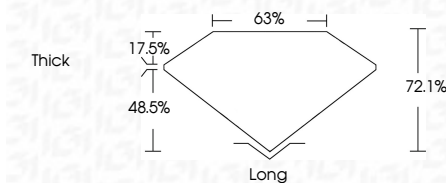
Red symbols indicate internal characteristics.
Green symbols indicate external characteristics.

COLOR

D - F	G - J	K - M	N - R	S - Z	FANCY
Colorless	Near Colorless	Slightly Tinted	Very Light Color	Light Color	

CLARITY

FL	IF	VVS ¹⁻²	VS ¹⁻²	SI ¹⁻²	I ¹⁻³
Flawless	Internally Flawless	Very Very Slightly Included	Very Slightly Included	Slightly Included	Included



ADDITIONAL GRADING INFORMATION

Polish **EXCELLENT**
Symmetry **EXCELLENT**
Fluorescence **STRONG**
Inscription(s) **760540295**



IGI



January 7, 2026
IGI Report No 760540295
EMERALD CUT
9.21 X 6.67 X 4.81 MM
3.03 CARATS
H
Color Grade
VERY GOOD
72.1%
63%
Thick
Long
EXCELLENT
EXCELLENT
STRONG
STRONG
 760540295