



**ELECTRONIC COPY**

## DIAMOND REPORT

January 8, 2026	
IGI Report Number	760540227
Description	NATURAL DIAMOND
Shape and Cutting Style	PRINCESS CUT
Measurements	5.85 X 5.82 X 4.53 MM

## GRADING RESULTS

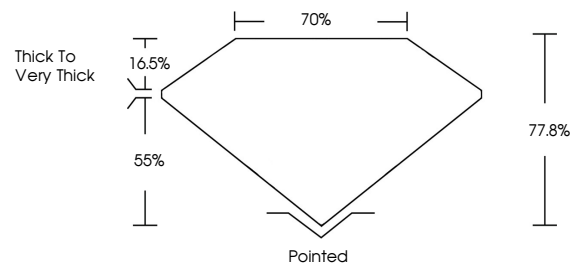
Carat Weight	1.51 CARAT
Color Grade	L
Clarity Grade	VVS 1
Cut Grade	VERY GOOD

### ADDITIONAL GRADING INFORMATION

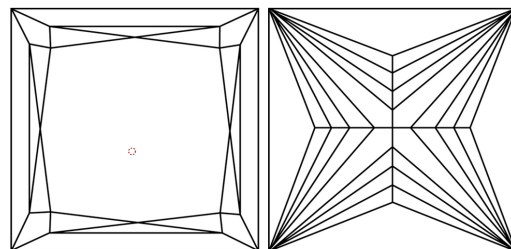
Polish	EXCELLENT
Symmetry	EXCELLENT
Fluorescence	NONE
Inscription(s)	131 760540227

760540227  
Report verification at [igi.org](http://igi.org)

## PROPORTIONS

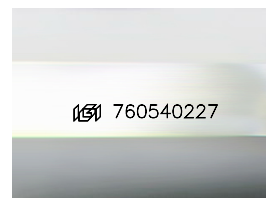


## CLARITY CHARACTERISTICS



## KEY TO SYMBOLS

Red symbols indicate internal characteristics.  
Green symbols indicate external characteristics.



Sample Image Used

**COLOR**

D - F	G - J	K - M	N - R	S - Z	FANCY
Colorless	Near Colorless	Slightly Tinted	Very Light Color	Light Color	

## CLARITY

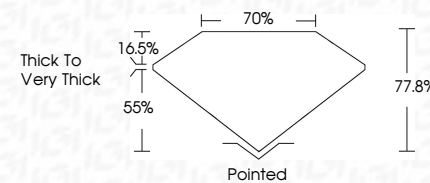
FL	IF	VVS <sup>1-2</sup>	VS <sup>1-2</sup>	SI <sup>1-2</sup>	I <sup>1-3</sup>
Flawless	Internally Flawless	Very Very Slightly Included	Very Slightly Included	Slightly Included	Included



January 8, 2026	
IGI Report Number	760540227
Description	NATURAL DIAMOND
Shape and Cutting Style	PRINCESS CUT
Measurements	5.85 X 5.82 X 4.53 MM

## GRADING RESULTS

Carat Weight	1.51 CARAT
Color Grade	L
Clarity Grade	VVS 1
Cut Grade	VERY GOOD



### ADDITIONAL GRADING INFORMATION

Polish	EXCELLENT
Symmetry	EXCELLENT
Fluorescence	NONE
Inscription(s)	(15) 760540227



IG



© IGI 2020, International Gemological Institute

FD - 10 20



THIS DOCUMENT WAS PRODUCED WITH THE FOLLOWING SECURITY MEASURES: SPECIAL DOCUMENT PAPER, INK SCREENS, WATERMARK, BACKGROUND DESIGNS, HOLOGRAM AND OTHER SECURITY FEATURES NOT LISTED AND DO EXCEED DOCUMENT SECURITY INDUSTRY GUIDELINES

**www.igi.org**

January 8, 2026  
 IGI Report No 7608  
 BUSINESS CITE

GI Report No 76054022  
PRINCESS CUT  
5.85 X 5.82 X 4.53 MM

5.85 X 5.82 X 4.53 MM	1.51 CARAT
Carat Weight	
Color Grade	

Color Grade	Clarity Grade	WS 1	VERY GOOD

Cut Grade	VERY GOOD
Depth	77.8%
Table	70%

Girdle	Thick To Very Thick
70%	

	Pointed	EXCELLENT
Culet		
Polish		

Symmetry	EXCELLENT
Fluorescence	NONE
Resolution(e)	450 740540227

Inscription(s)	(59) 760540227
----------------	----------------