



**ELECTRONIC COPY**

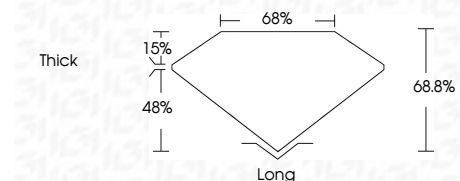
760539919  
Report verification at [igi.org](http://igi.org)



January 5, 2026  
IGI Report Number **760539919**  
Description **NATURAL DIAMOND**  
Shape and Cutting Style **EMERALD CUT**  
Measurements **7.14 X 5.03 X 3.46 MM**

**GRADING RESULTS**

Carat Weight **1.30 CARAT**  
Color Grade **J**  
Clarity Grade **VS 1**  
Cut Grade **VERY GOOD**



**ADDITIONAL GRADING INFORMATION**

Polish **EXCELLENT**  
Symmetry **EXCELLENT**  
Fluorescence **NONE**  
Inscription(s) **IGI 760539919**



January 5, 2026  
IGI Report No 760539919  
**EMERALD CUT**  
1.30 CARAT  
J  
Color Grade  
**VS 1**  
Clarity Grade  
**VERY GOOD**  
7.14 X 5.03 X 3.46 MM  
Depth 68.8%  
Table 68%  
Girdle Thick  
Long  
Polish **EXCELLENT**  
Symmetry **EXCELLENT**  
Fluorescence **NONE**  
Inscription(s) **IGI 760539919**

**DIAMOND REPORT**

January 5, 2026  
IGI Report Number **760539919**  
Description **NATURAL DIAMOND**  
Shape and Cutting Style **EMERALD CUT**  
Measurements **7.14 X 5.03 X 3.46 MM**

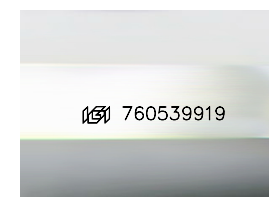
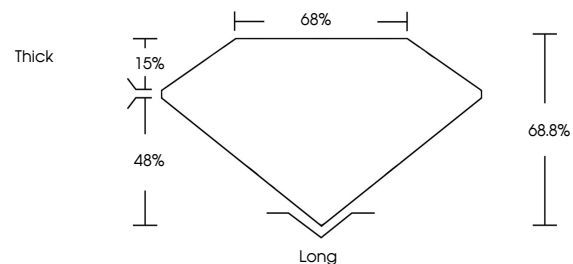
**GRADING RESULTS**

Carat Weight **1.30 CARAT**  
Color Grade **J**  
Clarity Grade **VS 1**  
Cut Grade **VERY GOOD**

**ADDITIONAL GRADING INFORMATION**

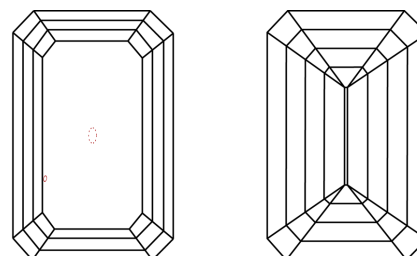
Polish **EXCELLENT**  
Symmetry **EXCELLENT**  
Fluorescence **NONE**  
Inscription(s) **IGI 760539919**

**PROPORTIONS**



Sample Image Used

**CLARITY CHARACTERISTICS**



**KEY TO SYMBOLS**

Red symbols indicate internal characteristics.  
Green symbols indicate external characteristics.

**COLOR**

D - F	G - J	K - M	N - R	S - Z	FANCY
Colorless	Near Colorless	Slightly Tinted	Very Light Color	Light Color	

**CLARITY**

FL	IF	VVS 1-2	VS 1-2	SI 1-2	I 1-3
Flawless	Internally Flawless	Very Very Slightly Included	Very Slightly Included	Slightly Included	Included

